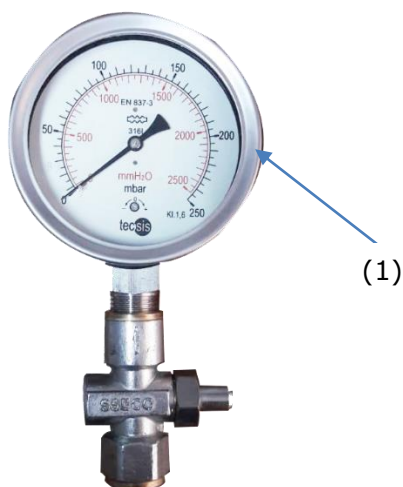


# PUSH BUTTON VALVES

MODEL: **PBV**

BULLETIN: 504

Page 1 of 1



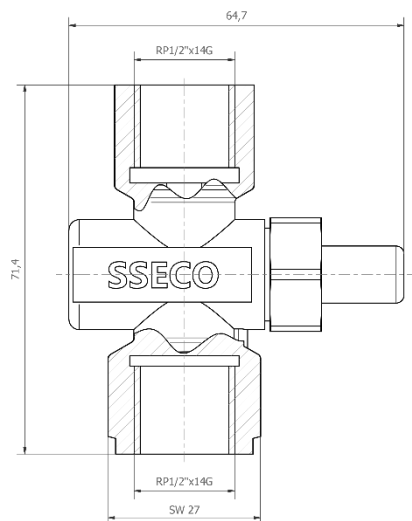
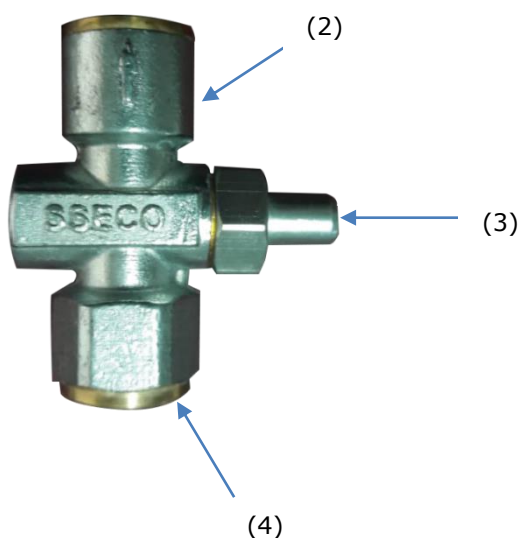
**PBV** Push Button valves are gas shutoff valves for pressure gauges. Push button valve replaces a manual ball valve when mounting pressure gauges to the gas piping.

## CHARACTERISTICS

- Size 1/2"
- Valve body: Brass

## Operation and Mounting PBV

- 1) Pressure Gauge
- 2) Push button valve
- 3) Push to read gauge pressure and release to remove pressure from gauge
- 4) Pipe connection to gas line



Model	Inlet Diameter (in)	Outlet Diameter (in)	Dimensions		
			A (mm)	B (mm)	SW (mm)
PBV-15	1/2	1/2	72	65	27

**SHOLEH SANAT ENG. & MFG. CO.**

MANUFACTURER OF BURNERS FOR FURNACES

FUEL CONVERSION OF BOILERS & FURNACES, DESIGN CONSULTATION AND INSTALLATION

REV.0 of 10<sup>th</sup> Oct. 2021