

ADJUSTABLE PISTON VALVES

MODEL:
ADV & ADVR

BULLETIN: 501
Page 1 of 2



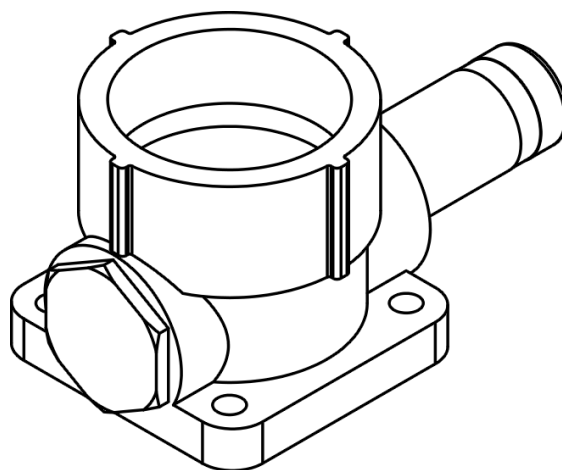
The **ADV** Adjustable piston valves are designed to be used for precise setting of gas or air flow rates in burners.

This valve can be adjusted sensitively and accurately with a screwdriver. Turning the screw counterclockwise and clockwise increases and decreases flow respectively.

A cap conceals the adjustment and discourages tampering with setting. These valves are not designed for shutting off gas; you may use approved plug (ball) valves or cock for this shutting.

APPLICATIONS & CHARACTERISTICS

- Suitable for setting flow rate accurately.
- Micrometric flow regulation for non-aggressive fluids: natural gas, LPG, air.
- Size from 1/2" to 3".
- Valve body: cast iron.
- Cap, piston and rising stem: brass/aluminum.
- Maximum operating pressure: 350 mbar (for special cases, it is possible to manufacture up to 4 bar).
- Fluid temperature: -30°C to 180°C.
- Adjustable piston valves can be supplied with pressure tap.



SHOLEH SANAT ENG. & MFG. CO.

MANUFACTURER OF BURNERS FOR FURNACES
FUEL CONVERSION OF BOILERS & FURNACES, DESIGN CONSULTATION AND INSTALLATION
REV.0 of 13th Oct. 2019

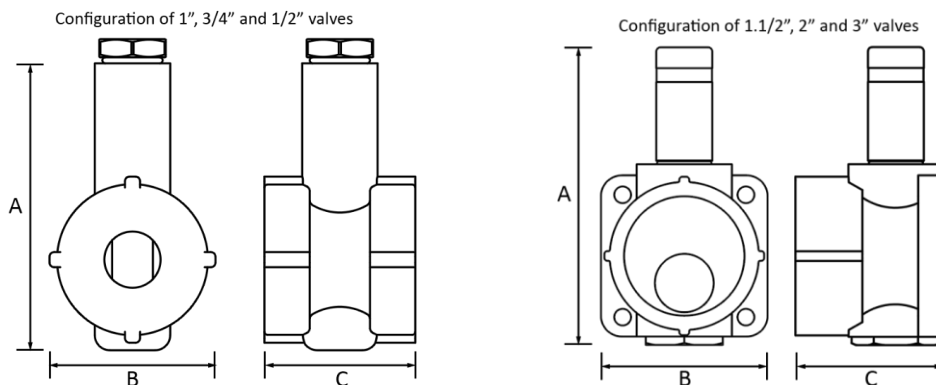
ADJUSTABLE PISTON VALVES

MODEL:
ADV & ADVR

BULLETIN: 501
Page 2 of 2

DIMENSIONS

Dimensions of different sizes of these valves are available in following table.



Model	Inlet Diameter (in)	Outlet Diameter (in)	Dimensions		
			A (mm)	B (mm)	C (mm)
ADV-15	1/2	1/2	95	55	50
ADV-20	3/4	3/4	95	55	50
ADV-25	1	1	95	55	50
ADV- 40	1.1/2	1.1/2	147	80	92
ADV-50	2	2	201	96	95
ADV- 80	3	3	214	119	106

* The Series **ADVR** equipped with damper motor.

* Base on customer's order different size of **ADV & ADVR** will be designed

INSTALLATION

- It is recommended to mount adjustable piston valves downstream of the measuring device.
- Check that there are no bodies inside the valve seat before installation, if necessary purge the ADV with compressed air.
- Verify that pressure taps are closed and tight.



SHOLEH SANAT ENG. & MFG. CO.

MANUFACTURER OF BURNERS FOR FURNACES
FUEL CONVERSION OF BOILERS & FURNACES, DESIGN CONSULTATION AND INSTALLATION
REV.0 of 13th Oct. 2019