

INDUSTRIAL HEATING

The International Journal of Thermal Processing

industrialheating.com

JUNE 2018

Industry Looking Up 10

INSIDE

- 28 Ideal Radiant Tube
- 33 Combustion Improves Productivity
- 38 Reader's Top-8 PC&I Articles
- 41 Inspecting Aircraft Composites
- 44 Energy-Saver Update

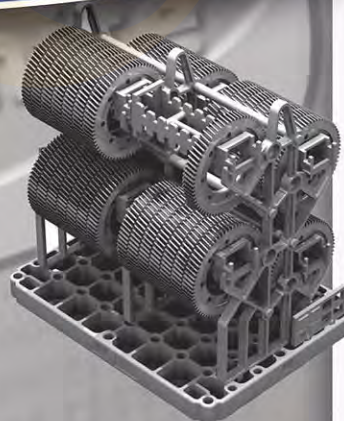
Better by Design

Greater efficiency with dedicated fixtures



Visit Our New Website
www.safe-cronite.us

Safe Cronite



Accepting Applications
for Regional Sales Reps
sales.nac@safe-cronite.com



North American Cronite

37162 Sugar Ridge Road • North Ridgeville, Ohio 44039

Phone 440-353-6594 • Fax 440-353-6599

E-mail: sales.nac@safe-cronite.com • Website: www.safe-cronite.us





First-Time Heat Treater Streamlines Production, Reducing Lead Times by Nearly 85%



"We used to send our products to a local heat treater before bringing them back in-house to finish the production process ... In the end, this strategy just wasn't working for us. It created long lead times and a convoluted in-house workflow that simply wasn't sustainable."

Customer Story



Reduced lead times from one week to processing parts in one night



Received comprehensive support and training throughout the process



Improved product flow throughout the facility

Challenge:

The customer was faced with long lead times and a convoluted in-house workflow as a result of having to wait for a truck to fill up each week before their parts could be heat treated.

Action:

Brought heat treatment in-house with an Ipsen TITAN® vacuum furnace to better manage their production throughput and improve the ways products move throughout the shop.

Discover this customer's winning outcome:
go.IpsenUSA.com/Customer-Stories

DX[®] Exothermic Gas Generators Engineered To Perform. Built To Last.

Bling

Brazing

Bright Annealing

Normalizing

Sintering

Stress Relieving

Tempering



Surface[®] Combustion DX[®] Gas Generators efficiently manufacture low cost exothermic gas for your specific process needs for ferrous and non-ferrous materials. Easily maintained DX generators are reliable and have high uptime. They are an economical alternative to on-site mixing of cryogenic gases or purchasing expensive pre-blended bottles.

Surface DX generators give you the flexibility to produce both rich and inert lean exothermic gas with a simple change of the incoming air/gas ratio. Standard sizes from 1000 to 35,000 cfm all have the capability to be turned down 2:1 to match production levels. Contact us today and let us show you the **Value of Surface.**



Surface[®] Combustion

Engineered To Perform. Built To Last.

value@surfacecombustion.com
1-800-537-8980

surfacecombustion.com



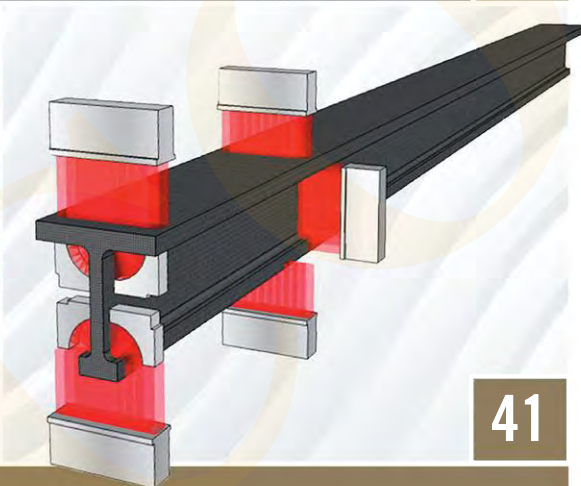
28



33



38



41

CONTENTS

JUNE 2018

FEATURES

28 **Heat Treating Working Toward the Ideal Radiant-Tube Performance**

Dennis Quinn – Fives North American Combustion; Cleveland, Ohio

Optimized production and minimized maintenance requirements are desirable conditions in any heat-treating operation. For applications depending on radiant-tube heat, following a few fundamental tips can help you achieve those goals.

Read it online at www.industrialheating.com/RTHT

33 **Industrial Gases/Combustion Combustion Technologies Improve Melting-Furnace Productivity**

Shailesh Gangoli, Anup Sane, Xiaoyi He, Kyle Niemkiewicz, Bruce Kenworthy and Russell Hewertson – Air Products; Allentown, Pa.
Jerry Evans and Ben Haiflich – SDI La Farga, LLC; New Haven, Ind.

New combustion technologies offer the ability to adjust the energy distribution profile and customize heat release to the requirements of a given melting operation. This article presents a specific example, showing reduced fuel consumption and burner maintenance time.

Read it online at www.industrialheating.com/meltcomb

38 **Process Control & Instrumentation Top-8 Process Control and Instrumentation Articles**

Reed Miller – Editor

The “Process Control and Instrumentation” topic is strongly affected by technology changes. Changes in specifications such as AMS 2750 also create uncertainty. Check out the reader-chosen articles in this list to find some help.

Read it online at www.industrialheating.com/PCI8

41 **Heat & Corrosion Resistant Materials/Composites Adaptive Ultrasonic Phased Array for Inspecting Composite Aircraft Components**

Andre Lamarre and Etienne Grondin – Olympus NDT Canada; Quebec City, Quebec, CANADA

Ultrasonic phased-array technology is widely used to inspect composite components in aircraft. Read more about it in this article.

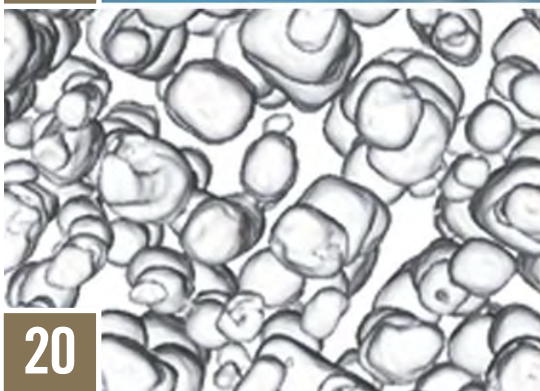
Read it online at www.industrialheating.com/PAcomp



10



14



20



22

CONTENTS

JUNE 2018

10 Editor's Page Looking Up

This month, we thought we would focus on some of the good news coming across our desks. It certainly seems as though things in our industry and economy are looking up.

13 Federal Triangle The Potential China Disaster

Barry Ashby details the problems with China, and they are many (including its lack of respect for intellectual-property rights). He also issues a stern warning: punitive actions could produce a global economic crisis.

14 The Heat Treat Doctor® Furnace Atmosphere Control Methods (Part 1)

Because the composition of the furnace atmosphere is always changing, we must use measurement and control devices to ensure the proper atmosphere composition necessary to achieve the desired metallurgical quality throughout the workload.

20 Academic Pulse A 3-D View of Modern Engineering Materials

The human brain is highly capable of interpreting the 3-D world in which we live. It has only recently become possible to look at the internal structure of engineering materials in a way that is "natural" to our brain (i.e., in 3-D).

21 MTI Profile Premier Thermal Solutions

22 IHEA Profile LIFT – Lightweight Innovations For Tomorrow

DEPARTMENTS

- 23 Industry News
- 27 Economic Indicators
- 47 Literature Showcase
- 48 The Aftermarket
- 50 Classified Marketplace
- 54 Advertiser Index

SPECIAL SECTION

- 44 Energy-Saver Update
A close look at energy-saving products and technologies from June advertisers.



On the Cover:

The steel industry is producing lots of material, and new mills are being built. Our industry is looking up, and you can read more about it in this month's editorial (p. 11).



INDUSTRIAL HEATING (ISSN: Print 0019-8374 and Digital 2328-7403) is published 12 times annually, monthly, by BNP Media, Inc., 2401 W. Big Beaver Rd., Suite 700, Troy, MI 48064-3333. Telephone: (248) 362-3700, Fax: (248) 362-0317. No charge for subscriptions to qualified individuals. Annual rate for subscriptions to nonqualified individuals in the U.S.A.: \$142.00 USD. Annual rate for subscriptions to nonqualified individuals in Canada: \$177.00 USD (includes GST & postage); all other countries: \$202.00 (int'l mail) payable in U.S. funds. Printed in the U.S.A. Copyright 2018, by BNP Media. All rights reserved. The contents of this publication may not be reproduced in whole or in part without the consent of the publisher. The publisher is not responsible for product claims and representations. Periodicals Postage Paid at Troy, MI and at additional mailing offices. For SINGLE COPY SALES OR BACK ISSUES ONLY: contact Ann Kalb at (248) 244-6499 or kalb@bnpmedia.com. POSTMASTER: Send address changes to: **INDUSTRIAL HEATING**, P.O. Box 2146, Skokie, IL 60076. Canada Post: Publications Mail Agreement #40612608. GST account: 131263923. Send returns (Canada) to IMEX Global Solutions, P.O. Box 25542, London, ON, N6C 6B2. Change of address: Send old address label along with new address to **INDUSTRIAL HEATING**, P.O. Box 2146, Skokie, IL 60076. For subscription information or service, please contact Customer Service at: Phone: (800) 952-6643 Fax: (847) 763-9538.



Vacuum Tech

NAURA
北方华创

Beijing NAURA Vacuum Technology Co., Ltd.

www.naura.com

SPECIALIZED VACUUM EQUIPMENTS MANUFACTURER



Hydrogen Furnace



Vacuum Furnace



Continuous Furnace

NAURA Technology Group Co., Ltd. is the fruit of strategic reorganization between Beijing Sevenstar Electronics Co., Ltd. and Beijing NMC Co., Ltd. and now is the leading enterprise of domestic semiconductor equipment.

Beijing NAURA Vacuum Technology Co., Ltd. (short for "NAURA Vacuum") is a wholly owned subsidiary of NAURA Technology Group Co., Ltd. NAURA Vacuum has more than 50-year experience in researching and making vacuum and thermo equipments and now has been top provider of Chinese high-end equipments and provide customers' high-end equipments and advanced process solution.

Products consist of vacuum furnace, hydrogen furnace, continuous heat treatment furnace and single crystal growing furnace applied in the fields such as aerospace, machinery manufacturing, new energy of Photovoltaic, vacuum electronics, new material etc. and products can be applied widely to brazing, sintering, heat treatment and crystal growing.

- ◆ Vacuum brazing
- ◆ Hydrogen heat treatment
- ◆ Vacuum sintering
- ◆ Tunnel furnace
- ◆ Vacuum heat treatment
- ◆ Belt furnace
- ◆ Vacuum induction casting
- ◆ Roller furnace
- ◆ Hydrogen brazing
- ◆ Single Crystal Growing Furnace
- ◆ Hydrogen sintering



Single Crystal Growing Furnace

Beijing NAURA Vacuum Technology Co., Ltd.

Address: No. 1 Jiuxianqiao East Road, Chaoyang District, Beijing China

Phone: 86 10 84572692 Fax: 86 10 64376543

Email: sales.nvt@naura.com

1

2

3

ONLINE

1 Social Media

Get Connected!

It's easier than ever to stay connected to the best source of news and information. Become a part of our online communities and access exclusive information, breaking news, event coverage and more. Connect with us on Facebook, Twitter, Google+, YouTube or LinkedIn to receive updates and to network with other industry professionals.

www.industrialheating.com/connect

2 New Podcast

Vacuum Heat Treat Minute

Our most recent installment of this Solar Manufacturing-sponsored podcast introduces the subject of eutectics and how to avoid these undesired metallurgical reactions when they are not intended during vacuum heat treatment.

www.industrialheating.com/vbtmin

3 Web Exclusive

Infographic: The Wide World of Welding

Everywhere you look it's easy to see the contributions welding has made to our world infrastructure. In this visual guide created by Tulsa Welding School, you'll discover the history of welding, its rise as an industry and its contributions to society and the economy as a whole.

www.industrialheating.com/world

INDUSTRIAL HEATING

Manor Oak One, Suite 450, 1910 Cochran Rd., Pittsburgh, PA 15220
412-531-3370; Fax: 412-531-3375; Online: www.industrialheating.com

MANAGING DIRECTOR

John Schrei schreij@bnpmedia.com; 248-786-1637

GROUP PUBLISHER

Darrell Dal Pozzo dalpozzod@bnpmedia.com; 847-405-4044

EDITORIAL/PRODUCTION STAFF

Reed Miller Associate Publisher/Editor – M.S. Met. Eng.,
reed@industrialheating.com; 412-306-4360
Bill Mayer Managing Editor, bill@industrialheating.com; 412-306-4350
Linda Becker Contributing Editor, beckerl@bnpmedia.com; 262-564-0074
R. Barry Ashby Washington Editor,
askbarry@industrialheating.com; 202-255-0197
Dan Herring Contributing Technical Editor, 630-834-3017;
heattreatdoctor@industrialheating.com
Dean Peters Contributing Editor, dean@forgemag.com; 216-570-4537
Karen Talan Production Manager, talank@bnpmedia.com; 248-244-6246
Brent Miller Art Director, brent@industrialheating.com; 412-306-4356

AUDIENCE MARKETING

Hillary Leman – AUDIENCE MARKETING COORDINATOR
Alison Illes – SENIOR INTEGRATED MEDIA SPECIALIST
Carolann Bienenek – AUDIENCE AUDIT COORDINATOR

For subscription information or service, please contact Customer Service at:
Phone: 800-952-6643 or Fax: 847-763-9538; Email: industrialheating@omeda.com

LIST RENTAL

Postal & Email Contacts

Kevin Collopy Sr. Account Manager; Phone: 402-836-6265;
Toll Free: 800-223-2194, ext. 684; Email: kevin.collopy@infogroup.com
Michael Costantino Senior Account Manager; Phone: 402-836-6266;
Email: michael.costantino@infogroup.com

ADVERTISING SALES REPRESENTATIVES

Kathy Pisano Advertising Director and Online Advertising Manager,
kathy@industrialheating.com; 412-306-4357, Fax: 412-531-3375
Becky McClelland Classified Advertising Mgr.,
becky@industrialheating.com; 412-306-4355
Rick Groves Eastern Sales Manager, grovesr@bnpmedia.com;
248-244-6444; Fax: 248-502-2109
Steve Roth European & Midwest Sales Manager, roths@bnpmedia.com;
520-742-0175, Fax: 847-620-2525
Mr. Arlen LUO Newsteel Media, China; nsmchina@126.com;
Tel: +86-10-82160060, Fax: +86-10-62150588
Becky McClelland Reprint Quotes; becky@industrialheating.com; 412-306-4355

SINGLE COPY SALES

Ann Kalb kalbr@bnpmedia.com

CORPORATE DIRECTORS

John R. Schrei Publishing	Lisa L. Paulus Finance
Rita M. Founia Corporate Strategy	Scott Krywko Information Technology
Michelle Hucal Content Deployment	Marlene J. Witthoft Human Resources
Michael T. Powell Creative	Vincent M. Miconi Production
Scott Walters Events	



BNP Media Helps People
Succeed in Business with
Superior Information

INDUSTRIAL HEATING 2018 EXECUTIVE COMMITTEE

Pictured left to right

Darrell Dal Pozzo Group Publisher –
Industrial Heating; dalpozzod@bnpmedia.com

Reed Miller Editorial Director –
Industrial Heating; miller@bnpmedia.com

Daniel H. Herring President – The Herring Group, Inc.;
dherring@heat-treat-doctor.com



Patrick McKenna President & CEO; Ipsen

Herb Dwyer Chief Operating Officer/General Mgr.;
Nanmac Corporation

Jonathan Markley Managing Director; SECO/WARWICK

Jim Nagy President; Solar Manufacturing



William J. Bernard III (B.J.) President; Surface Combustion

Marc Glasser Director of Metallurgical Services; Rolled Alloys

Steve Kowalski President; Kowalski Heat Treating

Jim Oakes Vice President Business Development;
Super Systems Inc.



ACROSS INTERNATIONAL



Founded and headquartered in New Jersey, Across International supplies laboratory equipment for heat treatment and material processing. Our equipment can be found in universities, research facilities, and labs all across the world. We have more than 25 years of industrial manufacturing experience, including induction heaters, drying ovens, ball mills, laboratory furnaces, and pellet presses.

Customer satisfaction is always our top priority. We respond to all inquiries within the same business day. We offer lifelong technical support for all of our machines, in addition to our excellent customer support.

Our knowledgeable sales team will help you select the perfect equipment for your project. We base our recommendations upon your application's specific requirements, so that you can be certain that the job gets done properly every time.

www.AcrossInternational.com
888-669-3339



Looking Up



REED MILLER

Associate Publisher/Editor
412-306-4360
reed@industrialheating.com

This month, we thought we would focus on some of the good news coming across our desks. It certainly seems as though things in our industry and economy are looking up.

Economic Indicators

A good place to start is *Industrial Heating's* monthly economic indicators. For those who are not familiar, each month we survey industry leaders from our readership who provide their feedback on the following four measures: change in number of requests for quotation (60), change in number of orders (57.9), change in backlog (56.6) and expected change in health of the industry (59.5). A number above 50 indicates growth in that metric. Beginning in December 2016, all four indicators moved into the growth category. Since then, there has been some up and down, but current numbers (in parentheses) are all in the upper-50s to 60, indicating strong growth. In the past month, three of the four indicators were up.

Kiplinger recently reported on 15 industrial stocks poised for gains in 2018. The 15 include eight companies with strong ties to high-temperature thermal processing and vertical industries. These include Caterpillar, Stanley Black & Decker, Carpenter Technology, Gardner Denver, The Timken Company, Emerson Electric, Illinois Tool Works and Honeywell.

A March *Bloomberg* article indicated U.S. factories expanded at a faster rate in February than at any time since 2004. These metrics are similar to our economic indicators, but they apply to all manufacturing. The report indicated that “in addition to firmer overseas and domestic sales, corporate optimism is getting a lift from the recent tax-cut law and reduced regulation.” Of the 18 manufacturing industries surveyed, 15 showed growth – led by primary metals and machinery.

Heavy Metal

If you are a subscriber to our daily news item – the IH Daily – you have probably noticed all of the good news in steel. Looking back to the beginning of the year, here are some of the highlights.

- New ironmaking plant in Ohio to employ 130.
- JSW USA invests \$500 million in hot-end facility.
- Republic Steel to reopen Ohio facility and bring back 1,000 jobs.
- U.S. Steel to restart blast furnace and steelmaking, calling back 500.
- TimkenSteel at full capacity on new quench-and-temper line.
- voestalpine orders vacuum and retort furnaces.
- JSW Steel orders two reheating furnaces.
- ArcelorMittal invests \$56.7 million in two reheating furnaces.
- Commercial Metals Company purchases Gerdau rebar facilities for \$600 million.
- Liberty House purchases South Carolina steel plant and will rehire 125.

That's a lot of good news in the steel industry, and we predict there is more to come. Needless to say, many of these moves were in anticipation of or in light of the tariffs announced by President Trump and reported in our IH Daily on March 9 of this year. To keep up with all that's happening in our industry, subscribe to our IH Daily and magEzine newsletters by using this link: www.industrialheating/newsletters.

Employment Gains

The stories bulleted here have resulted in a few thousand new or rehires. The Bureau of Labor Statistics has been showing that manufacturing employment is up every month, in large part accounting for overall gains. Unemployment in the U.S. at 4.1% is in the “full-employment” range. Many in our industry have faced challenges trying to hire qualified or qualifiable people and know the reality of this statistic. While 4.1% is the average for the U.S., eight states are registering unemployment rates below 3%, and 17 more are below the 4.1% average. For the record, the highest rate (7.3%) is found in Alaska.

Good news abounds in 2018, and *Industrial Heating* loves to report it. We will continue to keep you informed on a daily basis, and you can check our website news anytime at www.industrialheating.com/news. Enjoy the summer! ☀️

AFTERMARKET SPARE PARTS



Call one of our Aftermarket Specialists today for a quote or visit our website at solarmfg.com to see our full product line

Bryant Strelecki
Aftermarket Sales Manager

P 267-384-5040 x1537

E bryant@solarmfg.com

John Hahn
Inside Sales Engineer

P 267-384-5040 x1545

E johnh@solarmfg.com

KEEP YOUR VACUUM FURNACE UP AND RUNNING

Don't let one part keep you down. At Solar Manufacturing, we stock a full line of spare parts to support our customers around the globe with world class service at affordable prices regardless of furnace brand. Whether you are rushing to repair a damaged hot zone and need a fast response or performing routine maintenance and need helpful advice, our dedicated aftermarket specialists are standing by to take your call to assist in your time of need.



PROUDLY MADE IN THE USA 

www.solarmfg.com

VACUUM
FURNACES

AFTERMARKET
PARTS & SERVICE

REPLACEMENT
HOT ZONES

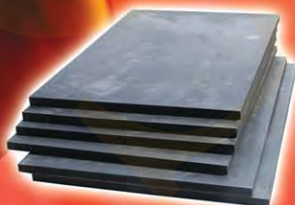
THE BRIGHTEST SOLUTIONS THROUGH INGENUITY



HSCF The carbon fiber company

carbon graphite thermal insulation material

carbon fiber, carbon felt , graphite felt
rigid graphite board, Hot Zone, CFC



HaoShi Carbon Fiber Co., Ltd GanSu

Address: NO.94 West Road of Station,
Chengguan, Lanzhou City, GANSU
PROVINCE, CHINA.
Postcode: 730010

Tel: 0086-931-8893573, 8893760,
0086-931-8893759, 8893751
Fax: 0086-931-8893753
Cell: 0086-150-0250-7210

Email:
haoshicf@gmail.com
haoshicf@yahoo.cn
haoshicf@haoshicf.com

WEB:
<http://www.chinahaoshi.net.cn>
<http://www.HSCF-Group.com>
<http://www.haoshicf.com>

The Potential China Disaster



BARRY ASHBY

Washington Editor
202-255-0197
askbarry@industrialheating.com

David Goldman, a scholar and writer for *Asia Times*, provides fascinating insights into growing American problems with China, which are unknown and misunderstood by Americans. He wrote that China:

- Is an empire based on coercion of unwilling people
- Is inherently unstable due to many un-cohesive cultures with numerous incompatible languages
- Exists under autocratic rule and is not a state with common popular interests
- Is a merciless meritocracy, under communism, as opposed to democracies that “accept stupidity”

Among China’s 1.38 billion citizens, STEM education is revered – 6-7% pursue it in the U.S. but 30-40% pursue it in China. Since 1987 China’s population consumes 17 times more goods and services than were formerly available. With the coalescence of population from rural to urban environments, exports of new/high (manufactured goods) technology has risen from 5% of GDP in 1999 to 25% today. U.S. output dropped from 20% to 7% of the total pie in the same time. Now overlay the fact that China, across the board, does not respect or adhere to concepts of ownership of ideas. Intellectual-property rights do not exist with China’s corrupt society and government regulation.

It is obvious with these conditions that a trade war, or something such as a battle over tariffs, could provide a net loss for U.S. participation. The mechanism for failure is that such a trade war will “cause global financial markets to unravel,” according to an American Enterprise Institute study. This may be what China really wants because it can withstand losses that the U.S. will not tolerate. Just look at existing American trade deficits with sample world nations (from 2017):

- France – \$15.3 billion
- Canada – \$17.6 billion
- South Korea – \$22.9 billion
- Italy – \$31.6 billion
- Ireland – \$38.1 billion
- Germany – \$64.3 billion
- Japan – \$68.8 billion
- Mexico – \$71.1 billion
- China – \$342.8 billion

Also, consider that under Section 301 of the Trade Act of 1974 the U.S. currently has 149 anti-dumping and countervailing duty rulings pending that have had little or no effect on trade relations with China. So, the recent (March 8, 2018) tariffs on steel and aluminum pursuant to Section 232 of the Trade Expansion Act of 1962 have no beneficial impacts on U.S. materials-using sectors.

What China wants is control of new technology improvements, and they acquire that through intellectual-property theft and coercion of industries wanting to conduct business with China. The country has done this since entry into the World Trade Organization in 2001 and has succeeded in destabilizing world trading systems ever since. This is not a matter of opinion or bias but is a policy initiative (CM2025) documented by China’s State Council.

The top economic advisor to China’s President Xi met with U.S. officials over two months ago during a peace-keeping mission to announce China’s intention to reduce its trade surplus with America. This was immediately accompanied by both nations issuing tariff hikes and punitive items worth \$50 billion on various imported goods. Any trade war with or by the U.S. will only bring disaster to the world economy, Chinese Commerce Minister Zhong Shan has said. You have a lot to learn if you think that a trade war where China intends to relinquish its rising industrial power will happen.

There are numerous threats and actual issues being discussed, such as:

- How to resolve the Chinese position that requires U.S. companies to transfer their patent rights to China before doing business there
- The Congressional bill that broadens powers to stop foreign purchase of U.S. firms prompted by concerns over China’s growing efforts to buy American high-tech companies
- Specific curbs on Chinese investments in the U.S. manufacturing economy
- Intent to restrict Chinese students from enrollment in U.S. higher education
- China’s “threat” to slow the buying of American government debt instruments

I love the last one. Congress, are you listening? President Trump, do you understand that punitive actions could produce global economic crisis? 🇺🇸

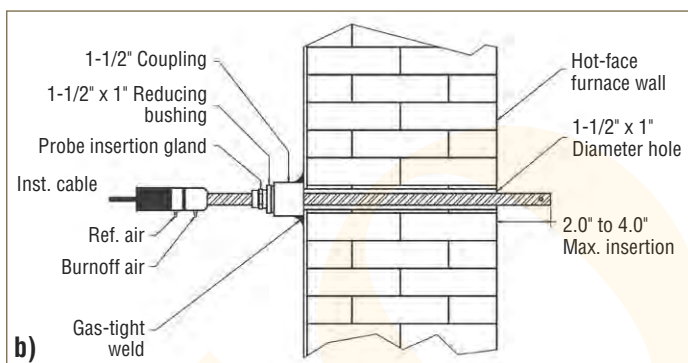


Fig. 1. (a) Typical oxygen (carbon) probes and (b) recommended mounting arrangement (courtesy of Super Systems Inc.)

how well a furnace does its job. Throughout the entire cycle it is critical to the process that we control the percentage of carbon dioxide, oxygen and water vapor as well as the ratio of enriching gas (or air) to carrier gas.

For example, surface carbon can be controlled within $\pm 0.05\%$ C during carburizing by measuring one or more of the gases mentioned above and adjusting the addition gases (hydrocarbon and/or air) accordingly.

Oxygen (Carbon) Probes

The oxygen (aka carbon) probe (Fig. 1) is an in-situ device that looks similar to a thermocouple for measuring temperature and typically sits inside the furnace, inside the generator (typically above the catalyst bed or in a separate heated "well" into which the furnace atmosphere is pumped). In whatever location, the oxygen probe measures minute changes in oxygen concentration of the furnace atmosphere.

A difference in partial pressure of oxygen in the furnace atmosphere and the partial pressure of oxygen in the room air induces a voltage across the electrodes in the probe. At any given temperature, there is a known relationship between the probe millivolt output and the oxygen potential of the atmosphere. The oxygen potential can be directly related to the carbon potential. Hence, monitoring the furnace temperature and the probe output can control the carbon potential of the furnace atmosphere.

The oxygen probe uses a conductive ceramic sensor, most often manufactured from zirconium oxide (Zr_2O_3). Operating range of the probe is normally 650-980°C (1200-1800°F). Oxygen probes can be used for a variety of atmosphere compositions, but they need to be calibrated for the specific

one in use. They are fast-response devices and subject to contamination by carbon, zinc and certain stop-off paint vapors. When used in carbonitriding applications, the presence of ammonia will shorten the life of the probe.

An oxygen probe in a carburizing atmosphere must incorporate periodic air burnouts (Table 2). The carburizing process in use will determine the burnout frequency.

A burnout consists of at least 0.28 m³/hour (10 cfh) of air piped to the burn-off fitting on the head of the probe. Room air or filtered combustion air are most commonly used. It is important not to use compressed air due to water and oil contamination that can damage the probe. The carbon controller should either control the frequency and duration of the burnout or shut off the gas additions in order to prevent excessive gas from compensating for the flow of air to the probe. Burnout flow and duration recommendations vary by manufacturer based on sheath diameter and tip design.

It is good practice never to exceed 90 seconds of air addition at any one time to avoid overheating the tip of the probe. A consistent way to verify a correct burnout is to monitor the millivolts of the carbon controller during the burnout phase. If a proper burnout is taking place, the output will drop below 200 millivolts. This can also vary based upon the circulation in the furnace and the probe placement.

A possible side effect of extended burnout duration is oxidation of the tip of the sensor. This problem can manifest itself in higher-than-normal millivolt values over the remaining life of the sensor, which will require a lower CO-factor setting for the same calculation of carbon potential. Consideration should be made for the duration of the burnout based upon the carbon level in the furnace.

The current trend is to use oxygen probes in combination with three-gas analysis (CO, CO₂, CH₄) equipment (Fig. 2) to calibrate the probe to a known CO value and to monitor the amount of free hydrocarbon gas in the furnace atmosphere. □

Table 2. Recommended burnout frequency^[a]

Atmosphere Type	Frequency of Sensor Burnout (hours)	Duration of Sensor Burnout ^[a] (seconds)	Flow of Burnout Air, m ³ /h (cfh)
Neutral	24	90	0.28 (10) ^b
High carbon	8 to 12	90	0.28 (10) ^b

Notes: ^[a]Recommended burnout time. Maximum time should not exceed 120 seconds before allowing the system to re-stabilize. ^[b]Minimum recommended flowrate.

The balance of this article can be read online at www.industrialheating.com/ACM. In Part 2, we learn more about measuring and controlling furnace atmospheres.

FREE Webinar



Vacuum Challenges and Solutions in Metallurgy

Vacuum technology used in metallurgy contributes to enormous improvements in product quality and surface finish. The metallurgy industry creates state-of-the-art materials that enable achievements in fields like aerospace, automotive, medical and many others. This presentation will include a brief introduction to vacuum technology in the context of metallurgy and will offer access to a comprehensive guide of current vacuum technologies being used in metallurgical applications today.

Key points we will examine during this webinar:

- Review of vacuum technologies used in high-temperature metallurgical applications
- An understanding of where these technologies are used in the context of flow, pressure range and application
- Common metallurgy applications described, focusing mainly on heat treatment
- Discussion involving the challenges, best practices and recommended technologies



Speakers:

Antonio Mantilla Inside Sales Engineering Manager

Peter Kardok National Sales Manager



SPONSORED BY



PRESENTED BY

**INDUSTRIAL
HEATING**



Register for this free webinar by using the QR-Code to the left,
or visit www.industrialheating.com/webinars

View this FREE Webinar Online June 21, 2018 @ 2PM ET

Simulation Software (Part Three: Nitriding, Nitrocarburizing)



DANIEL H. HERRING

The HERRING GROUP, Inc.
630-834-3017
dherring@heat-treat-doctor.com

Least but certainly not least, as the saying goes, is our discussion of gas nitriding and nitrocarburizing process simulators and how they are used to predict and control these case-hardening processes. Let's learn more.

Today, these simulators are available from several original equipment manufacturers and academic institutions for the purpose of determining the nitriding process parameters (i.e., cycle recipes) required to obtain a given case depth, to predict the compound-layer composition, and to anticipate both the final surface and core hardness as well as the hardness distribution throughout the case.

Key Challenges^[2]

Nitriding simulations are strongly influenced by two preconditions: material composition (i.e., the effect of alloying elements on nitriding activity, solubility, phase boundaries and diffusion coefficients) and prior microstructure (i.e., core hardness and microstructure impacting the final surface-hardness increase, final core hardness and the final hardness distribution) produced by prior heat treatments such as annealing, normalizing, austenitizing and quenching, or quench-and-temper operations.

One of the reasons that the prior microstructure is so important is that simulators need to determine the amount of nitride formers not tied up as carbides. Nitriding processes are ideally performed on quenched-and-tempered steels. Tempering is performed at a temperature of at least 10°C (50°F) above nitriding temperature. Simulators (and most specifications) typically estimate hardness distribution and case depth. Case depth is defined as core hardness plus 50 HV.

Simulators also need to determine hardness changes during nitriding. This is done by assuming that the softening effects that occur with increasing temperature are nucleation and tempering effects. Other factors that influence the simulator models (and involve an in-depth understanding of kinetics and thermodynamics) are nucleation, compound-layer growth and composition, diffusion/precipitation-layer growth and final hardness distribution.

These factors are incorporated into the output of the various simulators (Fig. 1) based on work by such noted individuals as Sun and Bell (nucleation theory^[4]), Hosseini, Ashrafzadeh and Kermanpur (compound-layer growth and composition^[5]), Fick (diffusion modeling) and Kunze (precipitation layer growth^[6]). While beyond the scope of this article, the reader is encouraged to review these papers to deepen their understanding of how these factors play a role in the inner workings of these simulators.

Ferritic Nitrocarburizing Simulators

Simulators for ferritic nitrocarburizing (Fig. 2) are typically adopted from their gas nitriding

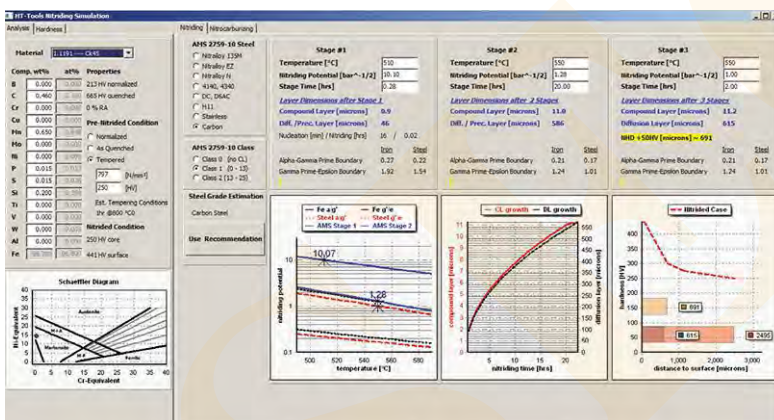


Fig. 1. Typical gas nitriding simulator output screen factoring in compound-layer composition and diffusion/precipitation-layer growth (courtesy of United Process Controls)

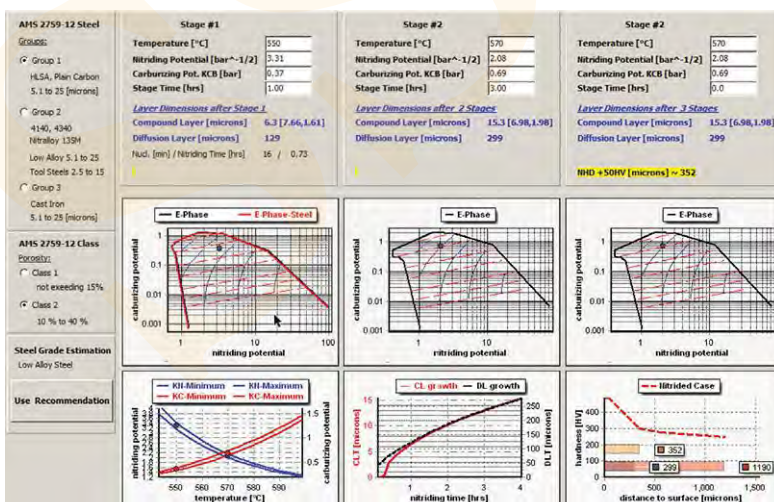


Fig. 2. Typical ferritic nitrocarburizing simulator output screen based on considerations of the iron-nitrogen-carbon phase diagram (courtesy of United Process Controls)

**MULTI-CHAMBER VACUUM**

CASEMASTER EVOLUTION®

A Strong Case For Productivity, Speed and Consistency.

The CaseMaster Evolution® (CMe) is a cost effective alternative to continuous atmospheric multi-chamber systems. CMe multi-chamber vacuum furnaces are available in two (in-out) and three (straight-through) chamber configurations. CMe furnaces can be equipped with high pressure gas or oil quenching. Advantages of these systems include increased productivity, faster carburizing cycles, consistent processing of densely packed loads, and uniform quenching with less distortion.

Learn more about our CMe furnace and see what SECO/VACUUM can do for you. Visit us at:
www.SecoVacUSA.com

SECO/VACUUM
The North American Vacuum Furnace Company

180 Mercer Street, Suite 101, Meadville, PA 16335
T: +1 814 332 8520 | E: info@SecoVacUSA.com

IF YOU WANT TO SEE THE FUTURE

IN TECHNOLOGY, EQUIPMENT & TRENDS

Don't Miss FNA 2018 Your Future Will Count On It!

The Big Event: October 8-10 | Register Today!

Indianapolis, Indiana | Indiana Convention Center



**The Largest
Heat Treating
Event in 2018**

www.FurnacesNorthAmerica.com

TOP BENEFITS OF ATTENDING **FNA** **2018**

LEARN the right data to collect for **predictive production and maintenance**.

HEAR solutions to your **everyday equipment maintenance** problems.

STUDY the latest **quenching and cooling** on instrumentation & automation.

SEE the latest in **furnace equipment and processes**.

ACQUIRE new solutions in operations and heat treating systems to minimize labor and **increase output**.

MEET 170+ suppliers that can **solve your operation and production needs**.

DISCOVER the latest compliance issues with **AMS 2750 and Pyrometry**.

NETWORK with the **best minds in heat treating** from all over the world.

FNA 2018 EDUCATIONAL TRACKS:



- ✓ Standards/Pyrometry
- ✓ Controls/Materials
- ✓ Quenching/Cooling
- ✓ Equipment
- ✓ Processes

- ✓ Heat Treat Business
- ✓ FNC/Nitriding
- ✓ Productivity & Data
- ✓ Emerging Technologies
- ✓ Maintenance



BRING A CAR LOAD

of Key Team Members:

- ✓ CEO/President/GM
- ✓ Key Managers in:
 - Quality
 - Safety
 - Engineering
 - Production
 - Maintenance

To see the latest
in Equipment,
Technology & Trends

A 3-D View of Modern Engineering Materials



DR. MARC DE GRAEF

Professor of Materials
Science and Engineering,
Carnegie Mellon University

The human brain is highly capable of interpreting the 3-D world in which we live. Not only do we continuously navigate 3-D spaces, but we can visualize in our mind what an object would look like as we spin it around. This advanced 3-D perception ability has evolved over eons out of the need to be able to function in the complex world around us.

It has only recently become possible to look at the internal structure of engineering materials in a way that is “natural” to our brain (i.e., in 3-D).

Looking inside a material to determine its microstructure – or the arrangement and shapes of phases and grains and the underlying structure of defects – requires some rather advanced characterization tools, but the basic principles are straightforward.

There are two main approaches: one nondestructive and the other destructive. Imagine having a complex but transparent object. Its transparency allows us to look inside to see how things are organized so that we can figure out how the object functions (think of plastic models of combustion engines or the human body). Metals are not transparent to visible light, but we can use high-power X-ray beams to penetrate through the material and thus reveal its interior structure. This is commonly known as X-ray computed tomography, or XCT.

The word tomography has a Greek origin and loosely means “to image by cutting or slicing.” By recording images of a material sample as we rotate the sample around an axis, we obtain a series of projections known as a sonogram. Using advanced mathematical techniques, one can convert those projections into a 3-D object representing the material’s internal microstructure.

The process is very similar to a medical XCT scan. In our labs at Carnegie Mellon, we have the ability to perform XCT experiments with a spatial resolution of a few tens of nanometers on samples with a volume of only a few thousand cubic micrometers. For larger samples, we often make use of the beam line facilities at national laboratories. The sample is not damaged during a scan, so we can repeat the measurements while changing the external conditions (e.g., heating, cooling, deforming).


Another way to look at the internal structure of an object is to cut into it and see what’s there. If we want to know the shapes and sizes of the holes in a block of Swiss cheese, we could take a sharp knife and cut parallel slices from the block; if we take a picture of each slice and put those pictures together using an image-editing program, we can then reconstruct what the internal structure of the block of cheese looks like. It is then only a small additional step to determine statistical distributions of hole sizes and densities, or the spatial correlations of the holes.

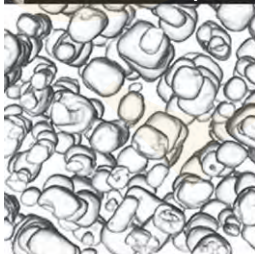
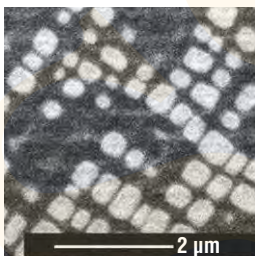
This type of serial sectioning is obviously destructive, but it allows us to obtain very high-quality 3-D reconstructions of complex microstructures. Typically, we use a focused ion-beam instrument, like a scanning electron microscope equipped with a high-energy ion gun that provides the “knife” to cut through the material.

In our facility at Carnegie Mellon, we have two such instruments: one with a Gallium ion beam and the other using Xenon ions. They are in almost continuous use for the study of 3-D microstructures in both metallic (magnesium alloys, superalloys) and ceramic (strontium titanate, solid-oxide fuel-cell components) systems.

A Deeper Dive into Professor De Graef’s Research

Over the past two decades, Prof. De Graef’s research group has been at the forefront of developing the numerical tools that allow us to convert raw experimental data from serial sectioning experiments into accurate 3-D reconstructions. This requires algorithms to align individual slices and to extract from each slice the different microstructural components, a process known as segmentation.

The figure shows a typical two-phase microstructure in a Ni-Cr-Al superalloy, in which ordered intermetallic precipitates are densely packed inside a disordered matrix. It is this dense packing that gives rise to the outstanding creep resistance at elevated temperature, enabling the use of these materials in the extreme conditions encountered in modern jet engines. 



Single-slice image from a
Ni-Cr-Al superalloy (top);
3-D reconstruction of the
precipitate phase (bottom).

Premier Thermal Solutions

Heat-Treatment Solutions for Your Most Challenging Products



MTI

Metal Treating Institute
904-249-0448
www.HeatTreat.net

Atmosphere Annealing Inc. was established in 1978 primarily focusing on processing automotive parts through bell annealing furnaces. The original Atmosphere Annealing also operated a phosphate coating line.

Today, the Lansing, Mich.-based MTI member operates as Premier Thermal Solutions (PTS), which is the parent company for Atmosphere Annealing LLC and NitroSteel LLC. Atmosphere Annealing operates four plants (two in Lansing, one in Canton, Ohio, and one in North Vernon, Ind.) that specialize

in metal heat treatment and phosphate coating. NitroSteel, meanwhile, specializes in selling ferritic nitrocarburizing for its facility in Pleasant Prairie, Wis.

With approximately 200 employees, PTS mainly serves the automotive, heavy truck, defense, agriculture, energy and heavy equipment industries. The company provides a wide range of services, including: normalizing, isothermal annealing, oil quenching, tempering, ferritic nitrocarburizing (FNC), stress relieving, shot blasting, phosphate coating, sawing and grinding. These services translate to better machinability, uniform microstructures, desired hardness and better formability.

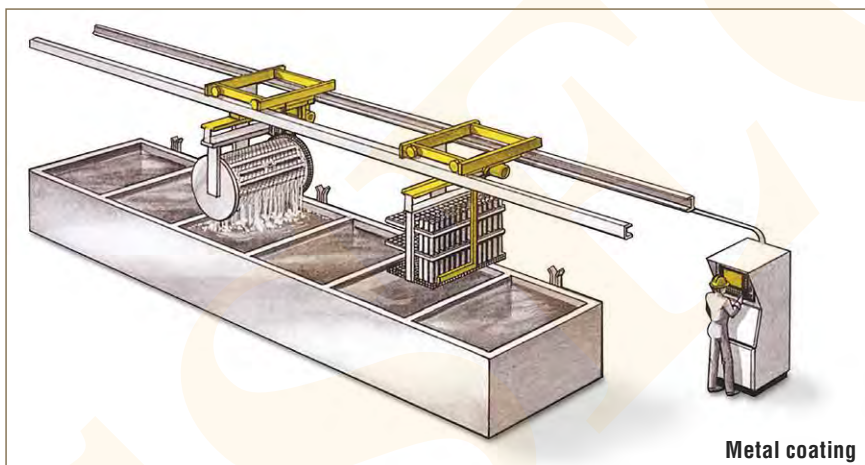
Having five locations strategically located throughout the Midwest allows PTS to be close to many of its customers, thus cutting down on freight costs. The company also offers trucking capabilities, which gives it an advantage when it comes to turnaround time.

Two aspects of the business really set PTS apart from the competition. One is the vast amount of metallurgical expertise within the company. Their technical team has over 140 years of combined metallurgical expertise. Because of this knowledgeable staff, PTS is able to process very difficult jobs with unique and tight tolerances. NitroSteel's niche, meanwhile – offering ferritic nitrocarburized bar stock – is unique in that it offers a superior alternative to chrome plating.

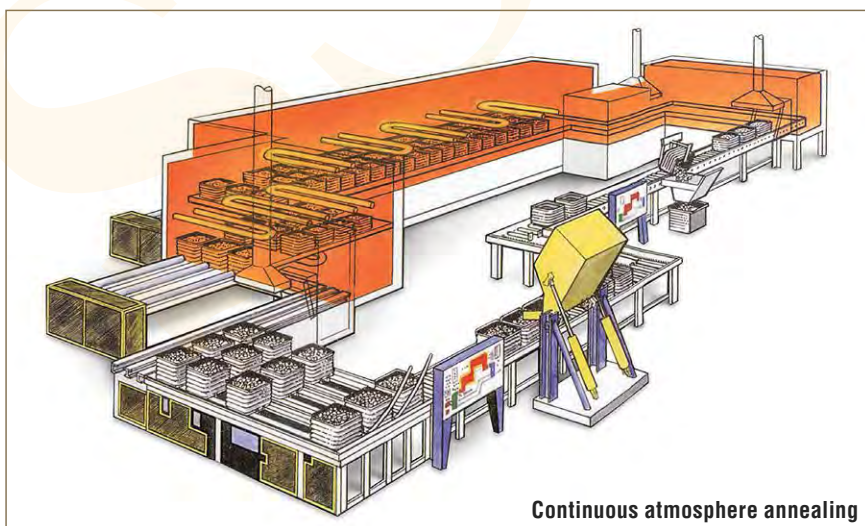
With recent investments for FNC capabilities in the Lansing plant and additional quench-and-temper capacity, the company continues to grow and look to the future.

One thing will remain the same, however. Premier Thermal Solutions' number-one goal is to ensure the needs of its customers are exceeded.

Visit www.premierthermal.com for more information on Premier Thermal Solutions.



Metal coating



Continuous atmosphere annealing

LIFT — Lightweight Innovations For Tomorrow



Metalworking has existed for thousands of years. However, there is plenty of room to innovate in one of the most mature materials in manufacturing ... including making it lighter.

That is why LIFT – Lightweight Innovations For Tomorrow was established – to revolutionize lightweight metals manufacturing through innovation and education.

One of the founding members of Manufacturing USA, a federal initiative to re-establish the United States as the world leader in advanced manufacturing, LIFT was set up in Detroit in 2014. Operated by the American Lightweight Materials Manufacturing Innovation Institute (ALMMII), LIFT is a public-private partnership designed to develop and deploy advanced lightweight materials manufacturing technologies and implement education and training programs to prepare the workforce.

Its 100,000-square-foot facility, which LIFT shares with IACMI – The Composites Institute, opened in late 2017 and boasts an 87,000-square-foot high bay. The facility also includes nearly

\$50 million worth of full-scale equipment for research and development in both metals and composite materials.

LIFT has set its sights on being best-in-class at its Detroit facility in thermomechanical and power processing, as well as agile forming and Integrated Computational Materials Engineering (ICME) across the aerospace, automotive, shipbuilding and defense industries. Its thermomechanical processing R&D work is performed in Detroit with the support of an extrusion press, hydroforming press and stamping/forming presses.

LIFT will also house a one-of-a-kind linear friction welder. Currently being built by MTI in South Bend, Ind., the machine will be one of the only linear friction welders available for R&D work. Coming online in 2018, the welder has immediate applicability in the aerospace and automotive industries. LIFT is looking forward to exploring how it can support other industries as well.

LIFT's network of academic and industry experts around the country will help it in other areas, such as joining and assembly; coatings and melt processing; life-cycle analysis; validation/certification; and cost modeling. LIFT provides the ability for its members to conduct proprietary R&D work at its facility and across the network and also government and industry-funded collaborative work. It also helps support small and medium-sized manufacturers with services like design and prototyping, engineering and technology assessments.

This new IHEA member is building a unique national asset to focus on building the talent pipeline of advanced manufacturing technicians. The LIFT Learning Lab will provide resources for the entire continuum of talent development, including:

- Students, teachers and faculty from K-12
- Community and technical colleges
- University and graduate degree programs
- Incumbent workers in small, medium and global enterprises

Visit www.lift.technology for more information on LIFT and how you can become a member or work with us on your metalworking problems.



Equipment & Business News

EQUIPMENT NEWS

Gas Nitriding System

Nitrex Metal received a contract from Qatar Aluminum Extrusion Company (Qalex) for the supply and installation of an NX-1015 potential-controlled gas nitriding system. The system is configured for treating various-sized flat and hollow dies used in the production of aluminum extruded profiles for the construction and transportation markets. The NX-1015 furnace has a load capacity

of 4,400 pounds (2,000 kg). While this is slightly larger than current production needs, the additional capacity will accommodate future growth when Qalex adds a second extrusion press.

www.nitrex.com



Box Furnaces

Lindberg/MPH shipped three natural-gas-fired box furnaces to a parts manufacturer for the oil-and-gas industry. The furnaces will be used to develop process-control requirements for heat treatment and stress relieving of underground mining/drill heads. They utilize automatic chamber pressure controls and space-saving, rear-mounted burners. The furnaces, which have a maximum operating temperature of 2050°F, have work-chamber dimensions measuring 36 inches wide x 20 inches deep x 24 inches high. www.lindbergmph.com



EXTREME ACCURACY. EVERYTIME.

PRECISION TEMPERATURE MEASUREMENT



THERMOCOUPLE TECHNOLOGY

Thermocouple & RTD Assemblies
Thermowells
Protection Tubes
Alloy Pipe & Tubing
Alloy Application Engineering
GTAW Certified Technicians
Calibration & Certification

Experienced engineers specializing
in custom built RTDs and Thermocouples

215-529-9394 / sales@tteconline.com / www.tteconline.com

Equipment & Business News

Vacuum, Atmosphere Furnaces

Ipsen recently shipped 10 furnaces to companies in California, Georgia, Ohio, Washington and Wisconsin, as well as to one location in Asia. This equipment will be used to process parts for companies in the aerospace, commercial heat-treating and medical industries. The shipments included two TITAN vacuum furnaces; two MetalMaster vacuum furnaces; one horizontal, internal-quench, 10-bar vacuum heat-treating and brazing furnace; and several custom-built atmosphere furnaces that will process parts for the aerospace industry.

www.ipsenusa.com

Horizontal Quench System

Wisconsin Oven Corp. shipped an electrically heated horizontal quench system to an aluminum casting company. The system will be used for solution treating aluminum castings for the aerospace and automotive industries. The solution-treating furnace is designed to heat a 2,500-pound load of aluminum, plus basket and work grid, to an operating temperature of 1020°F. The maximum temperature rating for this system is 1250°F, sized for a 5-foot-wide x 5-foot-long x 5-foot-high basket.

www.wisoven.com



Box Furnace

Lucifer Furnaces delivered a general-purpose box furnace to a manufacturer of precision metal stampings based in the Midwest. The furnace, which will be used to heat treat D2 and A2 steel under air atmosphere, has chamber dimensions of 12 inches high x 18 inches wide x 24 inches deep and heats to 2300°F. The roof is lined with ceramic fiberboard to eliminate cracking potential, and a 1-inch-thick cast hearth plate protects floor insulation and provides a flat work surface. www.luciferfurnaces.com

Vacuum Solutions for All Heat Treatment Processes

- › Reliable and robust
- › Low cost of ownership
- › Increased productivity
- › Reduced environmental impact



1-800-USA-PUMP
info@buschusa.com
www.buschusa.com

BUSCH
Vacuum Pumps and Systems

Brazing Line

SECO/WARWICK received an order for a continuous controlled-atmosphere brazing line from RAAL S.C., a manufacturer of automotive parts. The Romanian company will use the line – its third from SECO/WARWICK – for the production of aluminum heat exchangers. The brazing line, which is designed for high-capacity production, will deliver efficient, flexible throughput on a continuous basis.

www.secowarwick.com

Batch Ovens

Epcon Industrial Systems shipped two electrically heated batch ovens to a composite manufacturer in Houston, Texas. The ovens will be used for heating tooling used for composite moldings. The work chamber, which measures 5 feet deep x 5 feet wide x 6 feet high, is constructed with a stainless steel liner with 8-inch-thick insulation. The unique oven design offers high-temperature capability, with a maximum temperature rating of 900°F. www.epconlp.com

Heat-Treatment Line

SMS group received the final acceptance certificate for a tube-and-pipe heat-treatment line from Romania's TMK-Artrom that was ordered in March 2016. Designed for an annual capacity of 160,000 tons, the line will be used for the production of seamless high-strength pipes up to a wall thickness of 60 mm (2.36 inches) for mechanical applications and OCTG pipes. The line mainly consists of an austenitizing furnace with walking-beam transport system, cooling quenching head, quenching tank, walking-beam tempering furnace and cooling bed. The line allows various process steps, such as quenching, normalizing and tempering.

www.sms-group.com

BUSINESS NEWS

Solar Atmospheres Installs Machining Center to Support Tensile Testing

Solar Atmospheres of Western PA installed a second machining center to support its newest service, tensile testing. The company added a fully programmable 8,100-RPM Haas VF2 milling center to support the machining of flat tensile specimens. This machining ability fully complements the function of the 10,000-PSI hydraulic jaw that is an integral

component of the Tinius Olsen 300SL tensile machine. These large hydraulic jaws can grip either threaded-round or flat specimens. Solar Atmospheres is Nadcap and Boeing approved for all room-temperature tensile testing.

continued on p. 26

TWO PEAS... ONE POD

Furnaces North America
Booth 139

YOUR SINGLE SOURCE FOR ON-SITE HYDROGEN PRODUCTION.

Nel Hydrogen and Proton OnSite® have merged to form the world's largest hydrogen electrolyser manufacturer.

- Alkaline and Proton® PEM Technologies
- Safe, Clean and Cost Effective
- Consistent High Purity and Pressure
- Eliminates Tube Storage and Delivery Issues
- Scale to Match Any Thermal Processing Application

Visit us on-line or call for a consult with one of our sales engineers today.

nel
number one by nature™

+1-203-949-8697

www.ProtonOnSite.com



See Our On-Demand Webinar:

Hydrogen Generation Enables Elimination of Stored Ammonia for Thermal Processing

Register at: ww2.ProtonOnSite.com/IHWC2018



Equipment & Business News

Industrial Oven Manufacturer Adds Second Facility

JPW Industrial Ovens and Furnaces, an industrial oven manufacturer based near Williamsport, Pa., added a second facility to its operation. The new plant is expected to create 25 new jobs within the next two years. JPW's Plant 2 will manufacture the company's expanding line of standard industrial ovens. Plant 1 will continue to produce custom-made

industrial ovens and serve as the company's headquarters. Plant 2 began operation in January with 10 new employees. JPW anticipates that an additional 15 employees will be hired between now and 2020.



WISCONSIN OVEN

Horizontal Quench Systems

A Cost Effective Option for Your Solution Treatment Process

The Horizontal Quench System utilizes an electrically operated pusher/extractor mechanism providing a quench time as low as 7 seconds, which combined with a load capacity of up to 6,000 lbs, makes it ideal for a wide range of applications.



Benefits:

- 10 standard sizes
- Custom sizes available
- Gas fired or electrically heated
- Cost effective alternative to a drop bottom furnace
- Ideal for castings, extrusions, forgings, and other aluminum
- Automated controls available for easier operation
- AMS2750E compliance available
- Fully factory assembled and tested prior to shipment to reduce installation and start-up time

Standard Features:

- High capacity recirculation system
- Quench tank water agitation pump with distribution manifold
- Combination airflow through oven chamber
- Available temperature uniformity of $\pm 5^\circ\text{F}$ or $\pm 10^\circ\text{F}$
- Air operated vertical lift oven door & quench platform

2675 Main Street • PO Box 873 • East Troy, WI 53120 USA
www.wisoven.com • sales@wisoven.com • 262-642-3938



Wisconsin Oven is a brand of
Thermal Product Solutions, LLC

Premier/BeaverMatic Breaks Ground on Expansion

Premier Furnace/BeaverMatic started construction of an expansion at its Plant 1 facility in Farmington Hills, Mich. The project will provide space for a state-of-the-art testing and training facility, additional manufacturing capabilities and increased office space to allow Premier/BeaverMatic to accommodate business growth and customer needs. The 22,000-square-foot expansion is expected to be complete by fall 2018.

Bodycote Inks Deal with Rolls-Royce

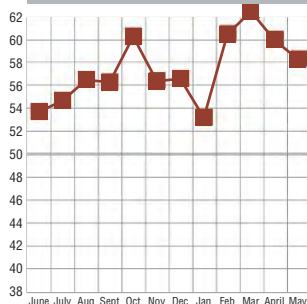
Bodycote signed a 15-year contract with Rolls-Royce's Civil Aerospace business that is expected to be worth over \$227.5 million in incremental revenues over the life of the deal. Bodycote will provide thermal-processing services including specialized vacuum heat treatment and hot isostatic pressing (HIP) to support Rolls-Royce's turbine-blade casting facilities in Derby and Rotherham, U.K. The agreement ensures the provision of thermal-processing capacity utilizing Bodycote's high-performance, quality-focused approach to support the growth of Rolls-Royce's large civil engine programs, which include the Trent XWB, Trent 1000, Trent 7000, Trent 700 and Trent 900.

New Company to Advance Powder-Bed Fusion AM

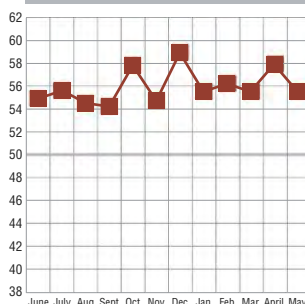
Stratasys Ltd. announced a new spin-off company designed to advance innovation of powder-bed fusion (PBF) additive manufacturing. Vulcan Labs' primary focus is improving the quality, repeatability and efficiency of PBF technology – initially focusing on metals. The company's solutions will be engineered to meet the complex demands of end-use production applications.

ECONOMIC INDICATORS

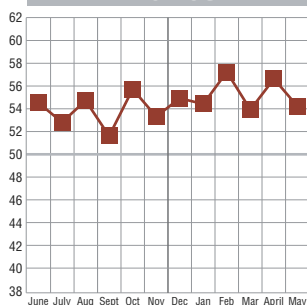
REQUEST FOR QUOTE



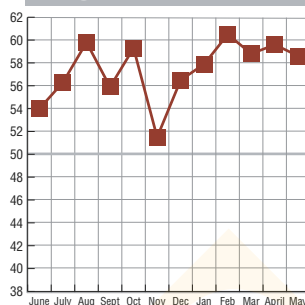
ORDERS



BACKLOG

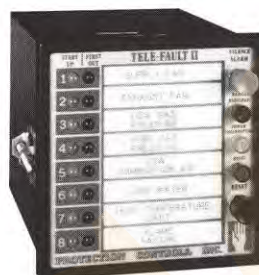


GENERAL HEALTH



Values above 50 indicate growth or increase. Values below 50 indicate contraction or decrease.
To participate in this survey, please contact Bill Mayer at bill@industrialheating.com

PRODUCTION STOPPED? LOCATE YOUR PROBLEM INSTANTLY WITH **TELE-FAULT® II** ANNUNCIATOR GETS YOU BACK IN OPERATION FAST!



TRIPLE FUNCTION FIRST-OUTAGE FAULT FINDER

- First-Outage
- Start-Up Status
- Power Interruption

Available From Stock

CHECK THESE OUTSTANDING FEATURES

- ⊕ Compact design (1/4 DIN Size)
- ⊕ Low cost
- ⊕ 8 Read-out positions
- ⊕ Single wire connections
- ⊕ No additional relays
- ⊕ Isolated alarm contacts
- ⊕ Quick response time
- ⊕ Long life LED display lights



For over 60 years, we have provided Electrical Safety Equipment for Industry. For complete info, contact us at email@protectioncontrolsinc.com. Visit our website at www.protectioncontrolsinc.com

PROTECTION CONTROLS, INC.

7317 N. LAWDALE AVE. • P.O. BOX 287 • SKOKIE, IL 60076-0287
(847) 674-7676 • CHICAGO: (773) 763-3110 • FAX: (847) 674-7009

Keep your furnace in its sweet spot. It starts with the atmosphere.

Controlling your furnace's atmosphere is critical for improved product quality, reducing operating costs, and increased productivity. That is why for over 40 years heat treaters have come to rely on Air Products' industrial gas-based atmospheres, equipment and technical support to optimize their heat treating operations.

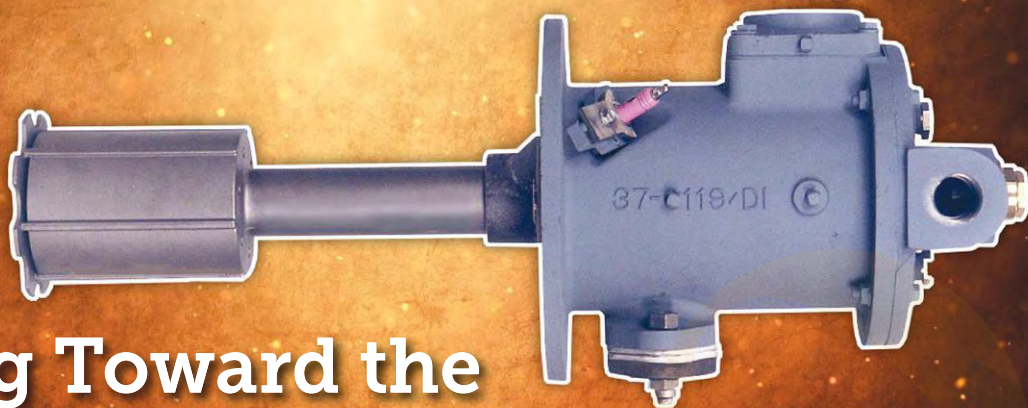
Contact us for a free gas optimization audit of your furnace operation to evaluate atmosphere composition, gas use efficiency, adherence to specification, and more.

800-654-4567
(mention code 10354)

tell me more
airproducts.com/mp



**AIR
PRODUCTS**



Working Toward the Ideal Radiant-Tube Performance

Dennis Quinn – Fives North American Combustion; Cleveland, Ohio

Optimized production and minimized maintenance requirements are desirable conditions in any heat-treating operation. For applications depending on radiant-tube heat, following a few fundamental tips can help you achieve those goals.

For a wide variety of applications where indirect heat is required, as opposed to direct firing, radiant tubes can provide a dependable answer. This indirect heating approach allows many sensitive materials to be processed in the absence of the products of combustion and, in many cases, in the presence of a protective or reactive atmosphere to impart changes to the properties of the heated product. Functioning by means of firing a burner into a tube structure, which then transfers the heat to the application, this method is deployed for processes such as case hardening, galvanizing steel and more.

But like any industrial heating technique, radiant-tube applications require proper selection, calibration and tuning in order to maximize production rates, minimize maintenance and optimize energy use and consumption.

Realizing the operational ideal for radiant-tube applications requires knowing the fundamentals, the ability to recognize common issues, and taking advantage of different methods and available technologies. This article will explore techniques for making the most of your radiant-tube heating applications.

Reviewing the Fundamentals of Radiant Tubes

First, understanding the common types of radiant tubes is critical to knowing how to operate them properly.

Radiant tubes can have many shapes, but for the currently installed industrial base, “W” and “U” tube systems are the most common and will be the primary focus here. A practical starting point to understanding their functionality is to review the tube temperature distribution of a W-type radiant tube (Fig. 1), where a burner is located on one end of the tube and an exhaust system on the other (along with an optional energy recuperator (Fig. 2) – more on that later).

In an ideal state, a radiant tube generates perfectly uniform temperature. This uniformity would result in the optimum use of the tube to transfer heat to the process while respecting the maximum-use temperature of the radiant-tube material. In common practice, however, this isn't the case for

a variety of reasons.

Resulting from the combustion and heat-transfer processes, physics dictates that the tube temperature will vary along its length. The temperature profile is characterized by an increase in temperature from the

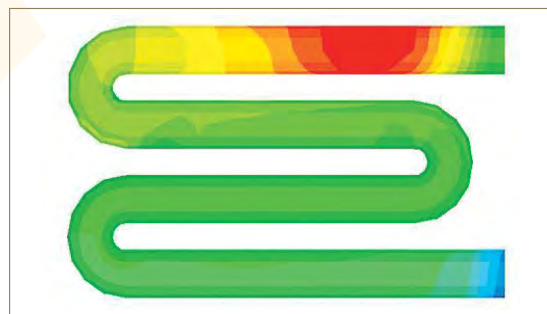


Fig. 1. Illustration of a common “W”-shaped radiant tube demonstrates the issue of temperature non-uniformity in a typical application; heat increases near the burner tip but dissipates further along the tube.

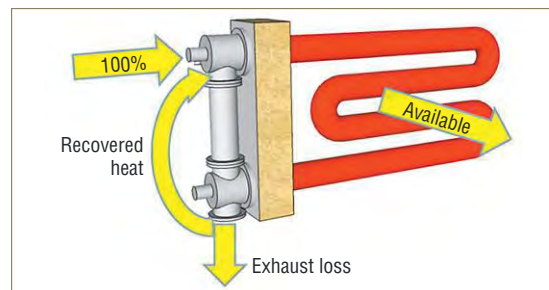


Fig. 2. Energy flows in a typical recuperative radiant tube are shown, indicating the energy input, energy transfer to the load, energy recovered by the recuperator and energy lost from the exhaust.

region near the burner tip to a maximum temperature that is typically located in the firing leg or at the first return bend in U and W tubes. If the tube is long enough, the temperature will decay along the tube's length and is at its minimum at the exhaust end of the tube.

Tube shape, diameter, length, location in the furnace, firing rate and tuning all have an impact on the temperature distribution and fuel efficiency, as does burner type and energy-recovery method. Understanding the influence of these parameters and optimizing their application and use result in optimized operation of the radiant-tube-heated furnace.

Obtaining Better Production, Longevity and Efficiency Through Tuning

Improvements in temperature uniformity can double or triple the service life of a conventional tube of the same material, and that can have a major impact on your operation. So why accept the status quo?

One way to ensure the best-possible performance and longevity of radiant tubes is through diligence in tuning (Fig. 3). Just like any regular maintenance task in a manufacturing environment, tuning helps reduce breakdowns, can improve your production rate and can ensure you are not losing dollars due to inefficiency. In an average radiant-tube furnace, a poorly tuned system using up higher rates of fuel and more regularly requiring failed-tube replacement can cost an organization hundreds of thousands of dollars per year.

When is it time to tune? Some common indicators can include:

- A drop in your rate of production
- An increase in furnace energy consumption
- Increased failures of your radiant tubes
- "It's been a while..."

Of course, there are a wide variety of factors that can limit the rate of production on a typical heat-treating furnace. But in many applications, production rate is determined primarily by the rate at which heat can be delivered to the furnace, and that is determined by your radiant tubes.

There are a couple of ways that regular tuning can impact your production rate. First, your available heat can be dramatically reduced when your tubes are operating at a less-than-optimized fuel-to-air ratio. Available heat is defined as the percentage of the fuel energy that is available to the process – the total energy input to the tube minus the exhaust losses.

Fig. 3. Changes in available heat dependent upon varying levels of oxygen and excess air, highlighting the importance of proper tuning.

Oxygen percentage dry	Excess air percentage	Available heat* percentage HHV
1.0	5	63.0
2.1	10	61.9
3.8	20	59.7
5.2	30	57.8

Praxair can help improve your manufacturing process.

Praxair has over 100 years in the use of industrial gases. We offer a full range of industrial gases and services for heat treating and combustion applications including:

- Heat treating atmosphere gases
- Purging and inerting process gases
- Award winning oxy-fuel combustion applications
- Gas quenching
- Thermal spray coating services
- Furnace audits and process evaluations
- Integrated gas supply capability
- On-site evaluation, design, testing, and installation
- Start-up and process support

For more information on how we can help your business, call **1-800-PRAXAIR** or visit **www.praxair.com/heattreating**.



PRAXAIR
Making our planet more productive™

When comparing systems, it is important to reference the available heat to a standard. For most applications in North America, the available heat is commonly referenced to the fuel's higher heating value, whereas Europe and much of the rest of the world references available heat to the lower heating value.

Take a look at the example table, which uses a 1750°F tube exhaust with 725°F combustion air preheat. As oxygen and excess air rise, available heat output to your

furnace drops. Consider the impact on production if you're running at 63% available heat versus 57%. It can be significant, wasting fuel not to mention potential production losses for heat-limited products.

It's a case of "little things mean a lot" with tuning. To understand the magnitude of fuel required to heat the furnace, a simple equation can be utilized:

$$\text{Gross input} = \frac{\text{Net heat required}}{\text{Available heat}}$$

or by division
(Expressed as a percentage)

$$\frac{\text{Gross input 2}}{\text{Gross input 1}} = \left(\frac{\text{Available heat 1}}{\text{Available heat 2}} - 1 \right) \times 100$$

Consider the implications, from Fig. 3, of an increase in oxygen from 2.1% to 3.8%. The difference in fuel consumption is $(61.9/59.7-1) \times 100 = 3.6\%$ extra fuel required for the same heat delivered to the furnace. It is not uncommon to find radiant tubes currently operating with much higher excess-air rates.

It's not just production and fuel consumption. Tuning can have a big impact on the life of your tubes. Regular tuning can help you avoid the common-but-inadvisable practice of operating tubes above the maximum material temperature, as described earlier.

One common practice is not reducing the radiant-tube input in the higher-temperature zones, such as within the last heating and soaking zones of continuous-processing furnaces. As the product temperature (or receiver) increases with the same burner input, the tube temperature rises. Figure 4 shows how neglecting input by zone will result in a portion of the tube operating over the material temperature limit. Understanding this reality will allow tailoring the input to the furnace demand. Most burner and furnace suppliers should be able to provide analysis and support to optimize the input profile to your furnace and reduce tube maintenance issues.

It's also important to keep your eyes on the furnace wall when it comes to

SHAPING THE FUTURE OF INDUCTION



Induction Heating Solutions

Single-Source Installation Packages, Inductor Design, Repair & Rebuild, Development



Quality Monitoring Systems, System Reliability Services, Preventive Maintenance

Ajax TOCCO is your complete source for induction heat treating systems, power supplies & installation

Worldwide Service, Support & Manufacturing

- Scanners
- Single Shot
- Lift & Rotate
- Tooth by Tooth
- Power Supplies
- Coil Repair
- Parts & Service
- Installation & Construction



World Headquarters
1745 Overland Avenue
Warren, Ohio USA 44483
+1-330-372-8511
+1-330-372-8608 Fax

24 / 7 Customer Service: 800-547-1527



Ajax TOCCO Group of Companies Global Brands



www.AjaxTocco.com

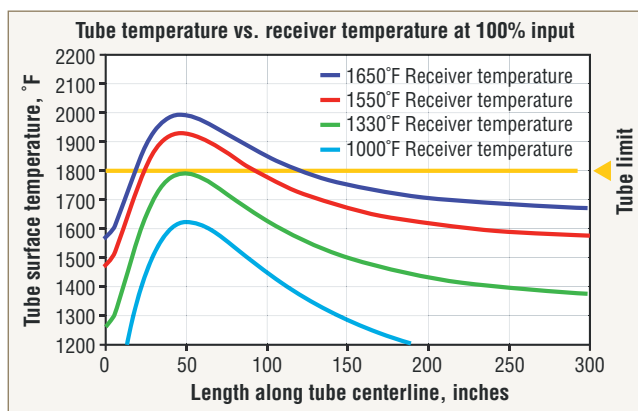


Fig. 4. Operating radiant tubes at 100% input can lead to portions of the tube operating beyond the material temperature limit as the heated product gets hotter.

ideal temperatures. In vertical furnaces, such as for steel strip annealing, there are some tubes that have product on both sides of the tubes and others that have a furnace wall on one side and product on the other. The side of the tube facing the wall will receive re-radiation from the wall, resulting in a higher tube temperature. When analyzed, the fuel input to these tubes should be reduced to 60-70% of the neighboring tubes to maintain a similar tube temperature and prevent overheating.

As a final consideration, care should be exercised with turndown on zones with a zone ratio control system. Maintaining



Fig. 5. A real-world radiant-tube application. One can visually notice areas in the tube glowing brighter than others, indicating temperature non-uniformity.

even flow distribution to many burners becomes more challenging as the input to the zone is reduced since the pressure is dropping with the square of the input reduction. Very quickly there is not sufficient pressure to evenly distribute the flow, and the ratio control on each tube suffers as a result. This becomes increasingly complicated if energy recuperation is employed. On/Off firing is often employed as a workaround to maintain distribution at turndown on these systems. However, this should only be

Advanced Radiant-Tube Products from Fives North American Combustion



Fig. 6. Fives North American 4723LNx low-emissions radiant-tube burner



Fig. 7. Fives North American 8480-series high-efficiency radiant-tube recuperator



Fig. 8. Fives North American TBRT III regenerative radiant-tube burner

Fives North American Combustion offers a range of radiant-tube products spanning several product classifications.

The 4723 family of ambient and preheated air burners has spanned decades of service across most radiant-tube application markets. External flame-length adjustments allow tailoring of the flame to the radiant tube, whatever the geometry. In recent years, passive-progressive flue-gas recirculation has been incorporated into the 4723LNx (Fig. 6), an easy solution to lower emissions and improve radiant-tube uniformity.

The 8480-series (Fig. 7) plug-in recuperator perfectly complements the 4723-series burner family. This robust design incorporating high-efficiency, high-grade stainless cast heat-transfer sections has proven longevity while achieving enhanced heat recovery, saving energy while simultaneously eliminating costly repairs of existing equipment.

Depending on requirements, the company's TBRT III (Fig. 8) compact TwinBed® regenerative radiant-tube burner offers increased production, significantly reduced fuel consumption and unequalled radiant-tube life, benefits realized by the users of over 3,000 current and earlier-generation TBRT burners. This high-efficiency bed typically yields energy savings of up to 60%.

Other radiant-tube burner products, air- and fuel-control systems and standard and custom combustion controls round out a full equipment offering for radiant-tube applications.

exercised in conjunction with energy recovery since operating tubes at maximum capacity eliminates the tube efficiency gains as the input is reduced by turning the system down.

There are many other potential interactions with radiant tubes that could be mentioned, but they are beyond the scope of this piece. In order to better understand your process, get in touch with your combustion-systems expert.

So, how often should you be tuning? There isn't a one-size-fits-all answer. It can depend on available manpower, your furnace's ratio control system, type and resolution, and other reasons. But you should be tuning once per year at an absolute minimum. Better yet, do it twice per year – even if you aren't noticing any immediate issues.

A simplified tuning process might look like the following:

Step 1: Set your maximum fuel rate to the burner according to design conditions.

Step 2: Adjust combustion airflow rates by oxygen concentration. Typically, this will range between 2-4%. Set at hot if there is no air-temperature compensation.

Step 3: If you're working with a modulating system, reduce it to the minimum setting. Be sure to watch the minimum pressure to your tubes for distribution. Also, try to set limits according to your process requirements.

Step 4: Adjust your system flow/pressure to deliver target

oxygen at turndown. Typically, this will range from 4-6% to maintain even distribution. Lower is better if your ratio control system is up to the task.

Improving Performance Through Technology

Beyond tuning best practices, any heat-treating application can provide additional improvements through the application of newer technologies and combustion styles.


One of the easiest improvements to implement (as well as to economically justify) is the addition of a plug-in recuperator in the exhaust leg. When applied with burners utilizing flue-gas recirculation, both efficiency improvements and tube temperature profile improvements are achievable.

Perhaps the most effective technologies are compact regenerative burners, which can be installed directly onto existing single-pass "U" and "W" tubes. In this system, one burner will fire into the radiant tube while the companion burner at the other end operates in exhaust mode, collecting energy in a regenerative heat-storage bed.

The firing/exhaust mode of each burner is reversed at regular intervals, thereby recovering energy previously stored in the exhaust cycle and delivering it as preheated combustion air to the firing burner of the radiant tube. Regenerative systems typically deliver available heat around 85%, but the greatest benefit is tube temperature uniformity, potentially increasing production rates and helping promote the longevity of your entire system.

Another advanced technology for existing straight tubes is a variant of the classical single-ended recuperative radiant tube. With this system, a burner and center tube are installed into one end of an existing (or new) straight-through radiant tube, with the other end capped. A high-efficiency recuperative burner initiates combustion in the annulus between the inner tube and the radiant tube to transfer energy directly to the outer tube, which radiates into the furnace. This method, combined with integral flue-gas recirculation, provides enhanced temperature uniformity and enables greater average heat input.

If you're looking to make a more significant investment, another combustion style involves complete replacement of the single-pass tubes with recirculating radiant tubes, such as "P" or double "P" forms. These replacement tubes utilize high-velocity burners to recirculate high volumes of spent combustion products through the tube, helping to dilute the combustion temperature and increase the temperature uniformity.

No matter your system, there are a number of best practices that should be followed to maximize your efficiency, improve your furnace production and avoid costly breakdowns and downtime. 

For more information: Contact Dennis Quinn, burner and blower products engineering manager, Fives North American Combustion, Inc., 4455 E 71st St, Cleveland, OH 44105; tel: 216-271-6000; e-mail: dennis.quinn@fivesgroup.com; web: combustion.fivesgroup.com/.

GRAPHALLOY® Bearings Work Where Others Won't



Handle High Temperatures and Harsh Operating Conditions with Ease.

- Survives when others fail
- Run hot, cold, wet or dry
- Corrosion resistant
- Self-lubricating
- Low maintenance
- -400°F to 1000°F (-240°C to 535°C)
- Ovens, furnaces, conveyors, mixers, dampers



GRAPHITE METALLIZING CORPORATION
Yonkers, NY USA

H2

+1.914.968.8400 • www.GRAPHALLOY.com

Combustion Technologies Improve Melting-Furnace Productivity



Fig. 7. Roof-mounted Transient Heating burner directing heat downward and toward the melt bath

**Shailesh Gangoli, Anup Sane, Xiaoyi He, Kyle Niemkiewicz, Bruce Kenworthy and Russell Hewertson – Air Products; Allentown, Pa.
Jerry Evans and Ben Haiflich – SDI La Farga, LLC; New Haven, Ind.**

New combustion technologies offer metals producers the ability to adjust the energy distribution profile and customize heat release to the requirements of a given melting operation. This article discusses how the unique capabilities of two new burners helped SDI La Farga increase productivity, decrease specific fuel consumption and significantly reduce burner maintenance time in its secondary copper-melting furnace.

SDI La Farga, LLC (SDILF) is a recycling operation that refines all types of processed copper to produce Cu-FRHC (fire-refined, high-conductivity) products. In 2014, SDILF had challenges with non-uniform heat distribution in their melting furnace, which led to uneven wear of the furnace lining and limited productivity. Their burners were also susceptible to frequent and prolonged maintenance delays from molten metal splashing and wear due to the corrosive atmosphere in the furnace.

SDILF's desire to address these challenges and achieve aggressive productivity targets led to the evaluation and implementation of unique combustion technologies capable of adapting to the diverse needs of the operation.

Forming a Baseline Using CFD Modeling

Figure 1 shows a schematic (top view) of the original configuration of the SDILF melting furnace. In the baseline operation, nearly 75% of the total energy input was delivered by two main burners (MB1 and MB2, located on the south side). The remaining energy (25%) was supplied using two auxiliary burners (A1 and A2, located on the east and west sides). The main burners used natural gas as fuel and oxygen-enriched air as the oxidizer, while the auxiliary burners used natural gas as fuel and pure oxygen as the oxidizer. All burners were aimed at the copper scrap (referred to as charge) located at the center of the furnace and introduced from the roof.

Given the single-pass flue-gas configuration (from south to north) of the furnace, it seemed logical to concentrate more energy on the south side of the furnace through the main burners. However, copper scrap is piled up at the center of the

furnace during melting, which led to the main flames reflecting onto the refractory walls. The south side of the furnace was overheated, while the north side witnessed relatively colder zones, which slowed down slagging operations.

The reflection of the flames and overheated refractory required SDILF to reduce both the firing rate and oxygen-enrichment levels to minimize refractory wear – a change that lowered the production significantly below design capacity. At lower firing rates, the problem of metal splashing and wear on the burners became more serious.

Researchers at Air Products conducted computational fluid dynamics (CFD) simulations to gain an understanding of flue-gas patterns and energy distribution during the melting process. The temperature distribution calculated by the CFD modeling is shown in Figure 2. The hot spots seen on the east and west sides of the furnace matched initial feedback from SDILF about high-erosion zones in the furnace.

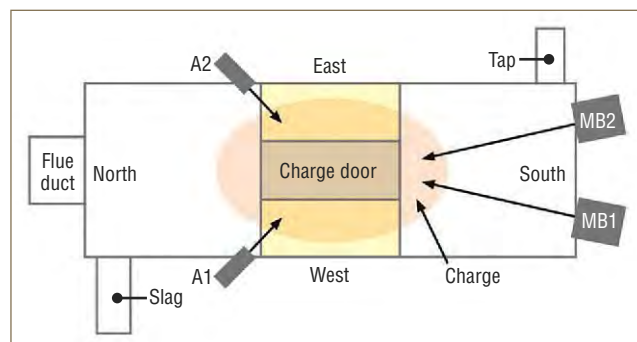


Fig. 1. Top view of the original configuration of the SDILF melting furnace

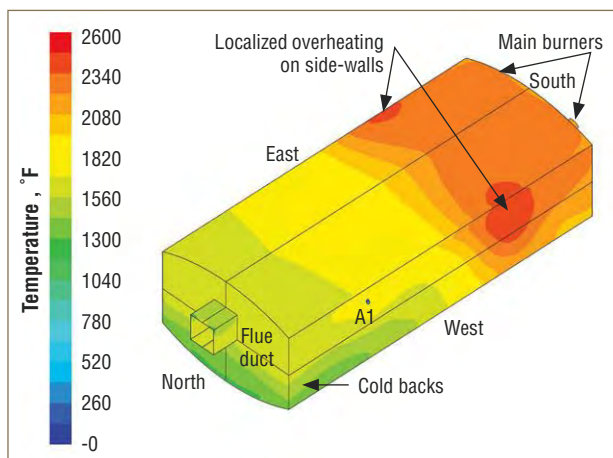


Fig. 2. CFD calculation of baseline SDILF operation (walls)

The modeling results were consistent with recurring maintenance needs experienced during operation, as well as refractory wear patterns observed during furnace outages. The flame impingement and uneven heat distribution caused aggressive refractory wear, especially on the south side of the furnace. The agreement between CFD results and observations during operation and outage gave SDILF confidence that implementing Air Products' technology could increase furnace performance.

Implementing Unique Combustion Technologies

Based on the understanding derived from CFD modeling, it was determined that the operation needed a combustion technology that provided a high degree of flexibility to adapt to the varying operating conditions within the furnace. The combustion technology needed to be capable of:

- Adjusting heat distribution to minimize overheating and limit flame reflection onto the walls and roof of the south side of the furnace
- Providing high gas velocities to minimize nozzle clogging

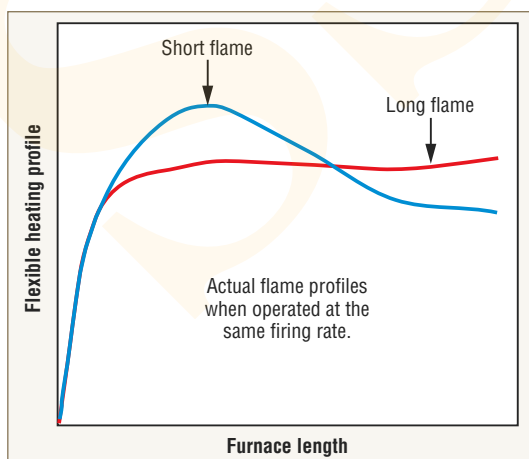


Fig. 4. Flexible heating profile of TEB technology



Fig. 3. Range of oxygen-enrichment operation of TEB technology

from metal splashes

- Allowing ease of maintenance in the case of metal splashing causing blockage
- Adjusting oxygen enrichment and flame shape to allow optimal performance with both charge-pile and flat-bath conditions

Air Products' patented Tunable Enrichment Burner (TEB), which uses a combination of natural gas, air and oxygen, was selected because it addressed these requirements. The ability to adjust the oxygen enrichment to affect the flame shape is shown in Figure 3. Figure 4 shows the ability of the burner to modulate the heat-distribution profile, allowing for optimal operation both while the charge pile is being melted and at flat-bath conditions.

The burner design also minimizes direct interaction of oxygen with the melt, ensuring lower yield losses due to oxidation. The TEB is considerably smaller and easier to remove from the furnace in comparison to SDILF's original burner, which allowed them to reduce burner maintenance downtime by 80% when splashing necessitated it. Additionally, the TEB's



Fig. 5. TEB firing at Air Products' Combustion Lab in Allentown, Pa.

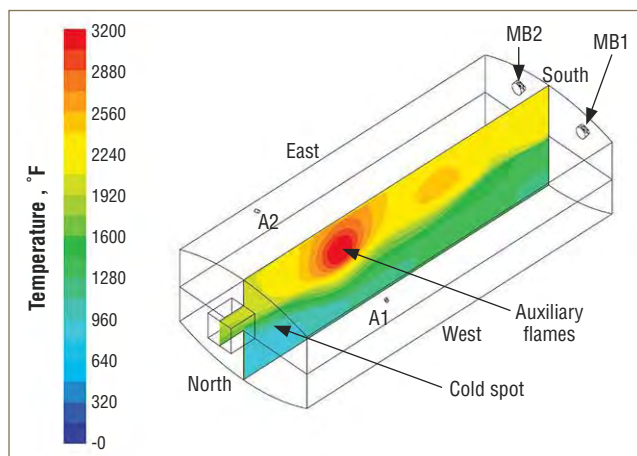


Fig. 6. CFD calculation of flue-gas temperatures inside the furnace during baseline SDILF operation

higher gas velocities significantly reduced the frequency of clogging due to metal splashing.

Figure 5 shows the momentum and well-defined structure of the TEB flame. Following deployment, the TEB delivered a 10% increase in overall productivity and a 15% reduction in specific fuel consumption.

SDILF originally considered a change of technology to improve the downtime associated with burner and refractory maintenance. The TEB accomplished both objectives. Burner maintenance, which was originally difficult and time consuming, turned into a 15-minute job that simply involved pulling the burner, clearing any obstruction and putting the burner back into operation.

Both SDILF and Air Products worked closely on burner modifications to create a design that facilitated easy removal and installation. The two teams worked well together to address each hurdle that arose in a timely manner. The reduction of burner maintenance time, reduced refractory wear and improved production were the key successes achieved by the TEB.

During the evolution of the TEB and installation designs, Air Products and SDILF discussed other concerns that the SDILF team had with the original auxiliary burners. These issues were related to inefficient energy utilization and high burner maintenance. With the measured success of the TEB, SDILF personnel were confident there was opportunity for further improvement.

Despite the flue being on the north side of the furnace, the baseline operation had constant problems with slag freezing and overheating of the roof of the furnace. While the orientation of auxiliary burners was effective at melting the charge pile, it did not allow SDILF to direct heat toward the north side of the furnace. The auxiliary burners also had maintenance and safety challenges because of the need for water cooling and frequent clogging from metal splashing due to their proximity to the melt bath.

The CFD modeling showed the interaction of the auxiliary flames with each other, the scrap pile and the main flames,

936 273 3300

epcon@epconlp.com

www.epconlp.com

OVENS & FURNACES
AIR POLLUTION CONTROL
SPECIALTY SYSTEMS
FINISHING SYSTEMS
SERVICE & RETROFITS



INDUSTRIAL GASES/
COMBUSTION

which created localized stagnation zones (shown by the red spot in Figure 6). This drove heat to the roof and away from the melt bath on the north side of the furnace.

To address these challenges, a burner was needed that would be capable of:

- Operating without water cooling
- Being mounted away from the melt bath to reduce maintenance needs due to splashing, without compromising the performance
- Directing energy to the pile and toward the north side of the furnace

- Eliminating the stagnation zone by directing heat toward the bath and away from the furnace superstructure

Air Products selected the patented Transient Heating Burner (THB) to replace SDILF's two auxiliary burners. The THB is a roof-mounted, non-water-cooled, multi-flame oxy-fuel burner that can direct energy to different parts of the furnace as required (Fig. 7 on p. 33).

The burner was programmed to operate as shown in Figure 8, where two flames are directed toward the centrally located scrap pile (mode A), and two flames are directed toward the north side (mode B), but always downward and toward the melt bath (Fig. 7). During melting, the burner was operated sequentially with more time in mode A compared to mode B, such that 75% of the total energy was directed to the scrap pile and the rest was directed to the north side.

The TEB and THB technologies firing in tandem, combined with operational improvements made by SDILF, resulted in a significant increase in the output from the operation, with 15% higher productivity and 25% lower specific fuel consumption compared to 2014 baseline operations.

The original intent of the THB phase of the project was to replace the high-maintenance auxiliary burners (A1 and A2 in Figure 1). The THB dramatically reduced the time and effort associated with burner maintenance. Once the THB was installed, SDILF also noticed improved performance of the furnace from a melt-efficiency and slagging perspective. The auxiliary burners caused issues with furnace refractory because of their orientation and location. Replacing them with the THB alleviated this problem by removing those issues in the operation.

Additionally, Air Products collected and analyzed relevant process data during both trials by installing supplementary data-collection capability to augment what SDILF already had in place. The data analysis suggested the



LINDBERG/MPH

THE HEAT IS ON

A Leader in Thermal Processing Furnaces

Lindberg/MPH furnaces provide you with fast heating rates, heavy load capacity, and reliability so you can achieve increased productivity. A full line of aftermarket services keeps your equipment running at peak performance.

Standard Furnace Models	Aftermarket Services
Box Furnaces	Instrument Calibrations
Pit Furnaces	Preventative Maintenance
PaceMaker® Integral Quench Furnaces	SCADA Systems & Controls Updates
	Temperature Uniformity Surveys
	Supervised or Turn-key Installations
	Replacement Parts

www.lindbergmph.com • Email: lindbergmph@lindbergmph.com • Phone: (269) 849-2700

 **TPS**
Thermal Product Solutions

Lindberg/MPH is a brand of Thermal Product Solutions, LLC.

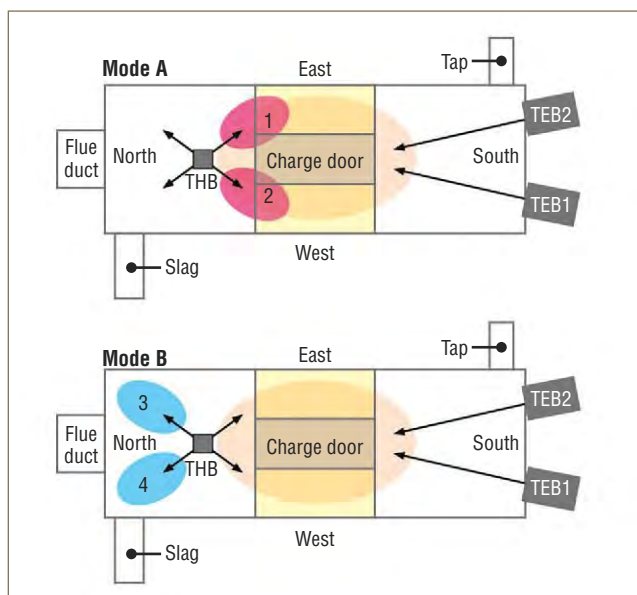


Fig. 8. Schematic of TEB and THB in operation at SDILF

use of less-dense material, which influenced feedstock-material charging practices. The data also advised SDILF on how to run the burners during the changes in the feedstock material.

The information revealed by the data analysis and CFD modeling convinced SDILF to place additional sensors to optimize performance. This provided added benefit because it helped improve all aspects of the furnace operation.

Summary

SDILF had many limitations in the early years of their furnace, including inefficient use of gas, downtime of the furnace due to refractory wear and long maintenance delays due to inadequate access and ability to maintain burners.

Tunable Enrichment Burner and Transient Heating Burner technologies were proposed for implementation in SDILF's secondary copper melting furnace. Though the burners were replaced in kind, the unique capabilities of TEB and THB technologies were leveraged to address challenges and drive operational improvements.

Specifically, productivity increased by 15%, specific fuel consumption decreased by 25%, burner maintenance time decreased by 80% and furnace relines decreased by 20%. The implementation of TEB and THB technologies have made a significantly positive impact on SDILF's mill operations.

Despite the unique features of the SDILF furnace, the challenges it presented are relevant to other more-conventional reverberatory furnace operations. The TEB provided the flexibility to tune the flame and oxygen enrichment for charge-pile to flat-bath scenarios. In addition, its high gas velocities helped to minimize nozzle clogging from metal splashes, and the ease of maintenance ensured minimum downtime.

The THB also provided heat in the furnace where it was

needed, eliminating cold zones. Each of these technologies enabled optimization of the overall process, proving the importance of choosing the right burner for the right application. ■

For more information: Contact Air Products, 7201 Hamilton Boulevard, Allentown, PA 18195; tel: 800-654-4567; web: www.airproducts.com/metals.

References

1. Gangoli, SP, Slavejkov, AG, Buzinski, MD. 2013, Staged Oxy-Fuel Burners and Methods for Using the Same. U.S. Patent 9,664,381, issued May 30, 2017
2. Sane, AV, Gangoli, SP, Slavejkov, AG, Buzinski, MD, Cole, JD, Hendershot, RJ, He, X. 2014. Transient Heating Burner and Method. U.S. Patent 9,360,257, issued June 7, 2016
3. Gangoli, S., Kenworthy, JB., Buragino, G., Hewertson, R., Sane, A., Mocsari, J.; "Oxy-fuel Technologies and Strategies for Secondary Aluminum Melting Operations," *Light Metal Age*, Vol. 75, No. 4, August 2017, p. 22
4. Palazzolo J., Sane A., Hewertson R. (Air Products), Chaleby N., Hilbert D., Yutko J., (Sapa Extrusions Inc.), "Customized Combustion Solution Yields Productivity Improvement for Aluminum Extruder," *Light Metal Age*, Vol. 73, No. 4, August 2015, p. 20

One Machine. Multiple Uses.



**DMP
CryoSystems**

Multiple Tempers | 1 Cycle
+1200°F to -300°F
99% UPTIME | 1 DATA Report
Call and Inquire Today!



www.cryosystems.com | 1-800-851-7302 | info@cryosystems.com

PROCESS CONTROL & INSTRUMENTATION

Top-8 Process Control and Instrumentation Articles

Reed Miller – Editor

The topic of “Process Control and Instrumentation” (PC&I) is strongly affected by technology changes. Sometimes it feels as if you need an electrical-engineering degree to wade through it all. Changes in specifications such as AMS 2750 also create uncertainty as to what is required and what is simply a nice-to-do. Check out the reader-chosen articles in this list to find some help.

Topics such as AMS 2750 always generate lots of reader interest. So, it's not surprising there are several AMS 2750-related articles on our favorites list. This, along with keeping up with new technologies, is what readers seek. Let's take a look at the current favorites from first moving to number eight.

The Latest on AMS 2750 Rev. E

Illustrating the industry's need for AMS 2750 information, an article written in January 2014 still leads our PC&I list. The article discussed the top-10 Nadcap nonconformances at that time, eight of which involved pyrometry. Apparently, the industry's attempt at clarifying the requirements for aerospace primes has created new auditor fodder. Check this article out to see how you can avoid some of the traps that have ensnared others. Find it using this easy link www.industrialheating.com/AMS2750.

Troubleshooting Thermocouple Failures in High-Temperature Applications

Thermocouple (T/C) failures can be a huge problem for manufacturers, and this relates to some AMS 2750 requirements. How do you know when it failed, and how much product might be affected by the failure? Find out which T/C materials are best for your application and how design can affect longevity of the probe.

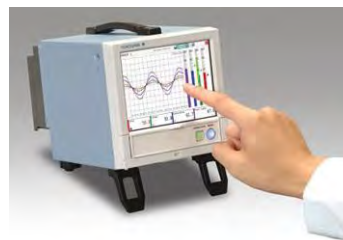
System wiring and electronics play a role in failures. It's important to understand probe life in your application because

you may choose to replace a T/C early rather than risk failure and its associated costs. Finding the true root cause for a thermocouple failure and eliminating it is important. It can lead to cost savings and reduce system downtime. Read more at www.industrialheating.com/TCfail.

New Technologies in Instrumentation

Are we using the instrumentation technology that will save us the most time and money and make it easier to meet requirements such as AMS 2750? This type of question causes readers to seek out information. As a result, this article from 2013 continues to be a reader-favorite. It discusses topics such as wireless technology, touch screens and cybersecurity. Part of the article's conclusion says, “When deciding on new

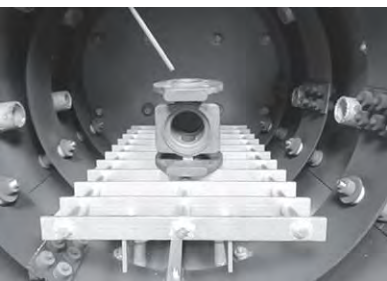
instrumentation, it is critical that newer technologies are considered because they may become mainstream in the future.” You can find this article at www.industrialheating.com/newtech.



Dew Point vs. Oxygen Content in Vacuum Processing

Accurate measurement of any heat-treating atmosphere is critically important for the quality and process yield of heat-treated components. Dew-point analysis has been a traditional measure because moisture parameters can impact carbon potential. However, a better, more-robust instrument was





needed to analyze endothermic or exothermic atmospheres. Oxygen probes or three-gas analyzers are now the industry's preferred analytical instruments to determine carbon potential.

The article's conclusion states, "When vacuum heat treating metal alloys that oxidize readily in the presence

of small concentrations of water vapor or oxygen, data suggests that dew point should not be the stand-alone gas purity analyzer. Dew point only measures the water vapor, not oxygen in the gas line. Including an oxygen analyzer as an additional quality tool provides the heat-treat shop greater assurance that the process gas entering the furnace is of the highest purity and meets the specifications of the customer." Find out what's drawing readers by reading this article online at www.industrialheating.com/DPv02.

AMS 2750E: What does it mean for your temperature sensors?

Another AMS 2750 article from May 2013 remains in the top-8. One of the challenges with AMS 2750 throughout the years is that changes are typically not highlighted from one rev to the other because they are too numerous. The latest revision is no different. SAE includes numerous technical changes to resolve issues determined in usage. However, one of the challenges as specifically noted in this latest revision is that the "Changes are extensive and not marked." As a result, users who are subject to compliance with AMS 2750E must

take the time to review the most recent revision thoroughly.

This article provided and continues to provide assistance by highlighting some of the more significant changes in AMS 2750E as they relate to temperature sensors. You can benefit from this work at www.industrialheating.com/2750revE. Another article from 2013 provides additional assistance at this link: www.industrialheating.com/2750E.

Are You Measuring the Correct Temperature?

Many factors, including pyrometer choice, emissivity and temperature calibration, influence accurate temperature measurement from a pyrometer. This May 2016 article looks at the common influences on inaccurate temperature measurement.

The following questions are answered: What wavelength of detector is used for a given temperature range? What detector wavelength should be used for an application? Why calibrate pyrometers? Why do pyrometers drift? How often should



pyrometers be calibrated? Why calibrate to a traceable national standard? To learn these answers and more, read this article at www.industrialheating.com/Tcorrect.

Uniformity Surveys: Make Your Data an Investment in Profitability

As some of our other PC&I favorites discuss, oxygen probes, PLC and microprocessor controls, digital charts and even database management have seen technology improvements. One area that has not experienced this is the temperature uniformity survey (TUS). This periodic test determines the ability of the furnace to be able to process work for CQI-9, Nadcap and other quality-system requirements.

As already discussed, meeting the requirements of AMS 2750 has become the bane of quality departments and the focus of auditors for decades. While data loggers have replaced the tedious task of recording individual temperature readings over time, they do not fit into the advanced world of Big Data. Real-time data collection of part dimensions, tool edge wear and even Rockwell hardness is quickly moving ahead, but the TUS is lagging behind.

Check out this November 2016 article to learn about the Virtual Visual Survey and why it may transform TUSs and make them compatible with the industrial internet of things (IIoT). You can link to the article here: www.industrialheating.com/VVS.



Automated Control of Heat-Treating Processes: Technology, Data Acquisition, Maintenance and Productivity Gains

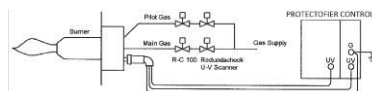
Furnaces are built and tuned for a variety of heat-treating processes, including: carburizing, carbonitriding, ferritic nitrocarburizing (FNC), annealing, tempering, nitriding and vacuum heat treating (among others). These processes require different types of gas generation; soak and quench times; and atmosphere and temperature control. In spite of the different





FOR SUPER SAFETY INTRODUCING

DUAL/REDUNDANT SELF CHECK UV FLAME SENSOR AND COMBUSTION SAFEGUARD CONTROL



Dual/Redundant Pilot Gas Valves ☒

Dual Redundant Main Gas Valves ☒

Dual/Redundant Self Check
UV Sensor and Combustion
Safeguard ☒



**No moving parts; high signal strength; recommended
for over 24 hours of continuous operation application**



For over 60 years, we have provided Electrical Safety Equipment for Industry. For complete information, contact us at e-mail@protectioncontrolsinc.com or visit our website at www.protectioncontrolsinc.com

PROTECTION CONTROLS, INC.

7317 N. LAWDALE AVE. • P.O. BOX 287 • SKOKIE, IL 60076-0287
(847) 674-7676 • CHICAGO: (773) 763-3110 • FAX: (847) 674-7009

PROCESS CONTROL & INSTRUMENTATION



requirements, control of these processes can be divided into two general categories: traditional and automated.

This August 2014 article discusses automated heat-treat processes, breaking it down into technology and productivity gains, data acquisition and benefits to maintenance. Should you automate your traditional control? The authors believe you should, and you can learn why by reading this article at www.industrialheating.com/btcontrol.

There are some very helpful articles in this selection. Especially if you missed them the first time, you owe it to yourself to have another look. If another PC&I topic is of interest, simply use the search function on our website to read more about it.



INDUSTRIAL HEATING

Use this QR-Code to read more on the topic of Process Control & Instrumentation or use this URL: <https://bit.ly/2Finj0M>

TAILOR-MADE INNOVATIONS FOR THERMOPROCESSING OF ALUMINUM



PUSHER TYPE FURNACE



STRIP FLOTATION LINE



OTTO JUNKER GMBH
Jaegerhausstr. 22
52152 Simmerath
Germany

Phone: +49 2473 601-0 | Fax: +49 2473 601-600
E-Mail: info@otto-junker.de

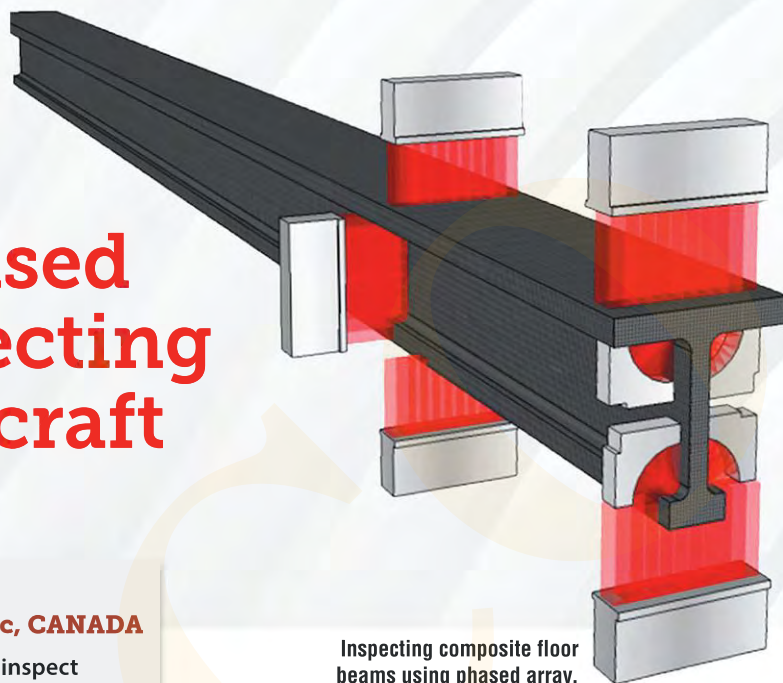
WWW.OTTO-JUNKER.COM

**WE
UNDERSTAND
METALS**

Adaptive Ultrasonic Phased Array for Inspecting Composite Aircraft Components

**André Lamarre and Etienne Grondin –
Olympus NDT Canada; Quebec City, Quebec, CANADA**

Ultrasonic phased-array technology is widely used to inspect composite components in aircraft.



Inspecting composite floor beams using phased array.

Composite components are used extensively in the design of new-generation aircraft. During manufacturing, the aircraft's structural components must be inspected with ultrasonic technology to ensure their integrity. However, this inspection can be challenging. Some components have very complex shapes where the surfaces are constantly changing. In addition, some manufacturing processes have loose production tolerances that result in components with slightly different shapes than the original design. In these varying circumstances, complex automated scanners are commonly required for ultrasonic inspections to maintain an ultrasonic beam normal to the component's changing surface. However, even then there is no guarantee that the ultrasonic beams will remain perpendicular to the part's surface.

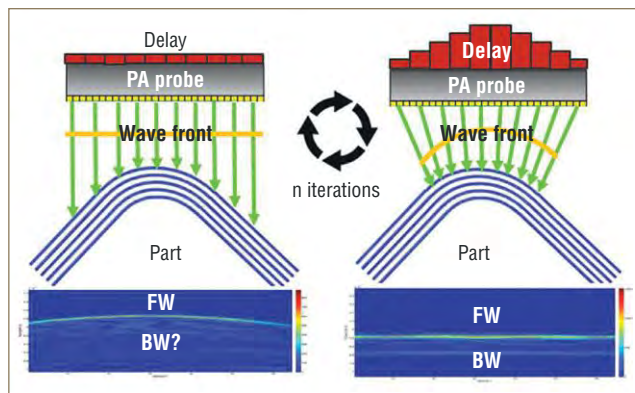
The use of an adaptive ultrasonic method with phased array is a solution to inspecting components with complex shapes. This setup locally applies a correction to the ultrasonic beams, helping ensure the beams propagate normal to the surface at each inspection position.

Ultrasonic Phased Array

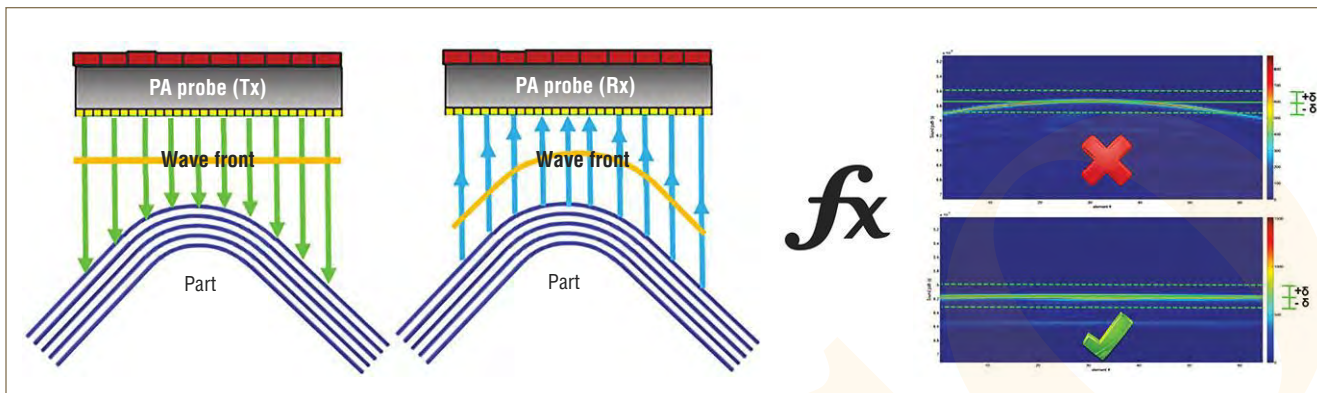
Ultrasonic phased-array technology is widely used to inspect composite components in aircraft. The main advantage of the phased-array technique is the use of a large array where the ultrasonic beam is generated by a group of elements using time delays (focal laws). The beam is then multiplexed over the length of the array. This electronic scan enables coverage of a large area while maintaining high resolution. In addition, modern electronics are scalable and can drive multiple phased-array probes in parallel for increased productivity. Because of these

benefits, phased-array technology is widely used by most of the composite component manufacturers worldwide.

The process of generating ultrasonic beams using predefined focal laws is deterministic. This means that the time delays are calculated using a known geometry, a measured distance between the probe and the component, the curvature of the component, probe orientation, etc. During the inspection, the beams are generated based on the model input during setup and cannot adapt to changes in any of these parameters. For most flat or nearly flat components, the effect is negligible. However, this limitation is important when the component being inspected has a severe curvature or irregular tolerances. In



The process of adaptive ultrasound. On the left, the front wall of the component appears as a curve; the back wall is not detected, showing that the part was not properly inspected. On the right, after multiple iterations, the beams are corrected in such a way that the front wall is a line and the back wall is properly detected. As a result, all indications located in the component can be properly detected.



The three steps of the adaptive process

these instances, an adaptive ultrasonic phased-array solution is required.

Adaptive Ultrasonic Phased Array

Adaptive ultrasound is an acquisition strategy that has gained popularity in the aviation industry because it facilitates ultrasonic inspection of the increasingly complex parts manufactured for new aircraft.

Adaptive ultrasound enables the transmission of a wave front parallel to the surface of a part with complex geometry. The adaptive ultrasound process can be divided into three steps. First, a plane wave is transmitted using all available elements on the phased-array probe, and the elementary A-scans are recorded.

The second step is an iterative process that adapts the front wave to the geometry of the part. This process adjusts the delays for each transmission event until a convergence criterion, based on the time of flight from each element, is reached. Once the convergence criterion is reached, the third step is to generate summary A-scans, just like in a standard phased-array inspection, using the elementary A-scan received from the last transmission event.



L-shape component inspection

Benefits of Adaptive Phased Array

In the aviation industry, adaptive ultrasound helps address the following inspection challenges:

- Components with varying radiuses and twists
- A manufacturing process leading to components with non-uniform radiuses (weighted radius)
- Misalignment of the phased-array transducer relative to the inspected part

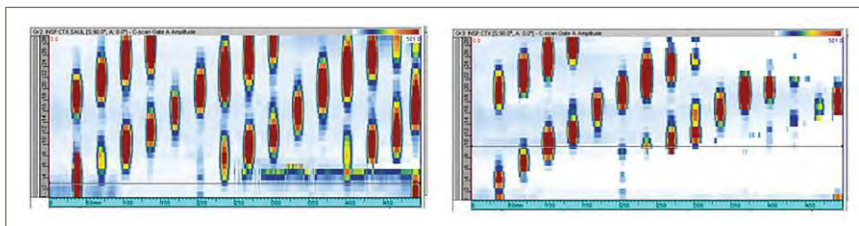
In this section, we illustrate the benefits of adaptive phased array using three examples. The first two examples were performed on an L-shaped component. The radius of the component was inspected using a 5 MHz curved phased-array probe with a local immersion-probe holder. In these two examples, the radius of the component varied from 0.2 inch to 0.5 inch over its length, but the first component has a uniform radius and the other has a non-uniform (weighted) radius. Delaminations are embedded in the components at different positions. Scans were performed with and without the adaptive algorithm.

The result shows the C-scan mapping of the components' radiuses. In both cases, all the delaminations are clearly visible with the adaptive algorithm, while the C-scan without the adaptive method has zones containing undetected flaws.

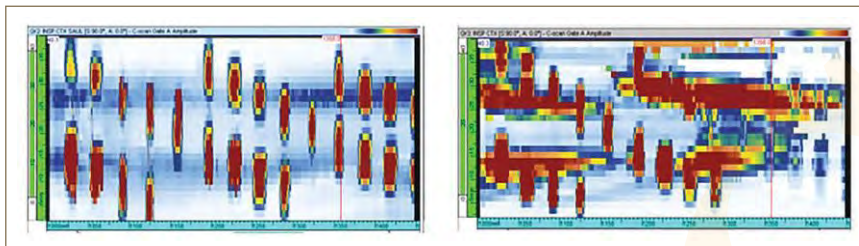
In the third example, a 5 MHz linear-array probe was intentionally misaligned. The test was performed in an immersion tank. We can see the effect of a misaligned phased array probe, while the C-scan obtained using the adaptive method corrected the beams, enabling the components to be properly inspected.

Considerations

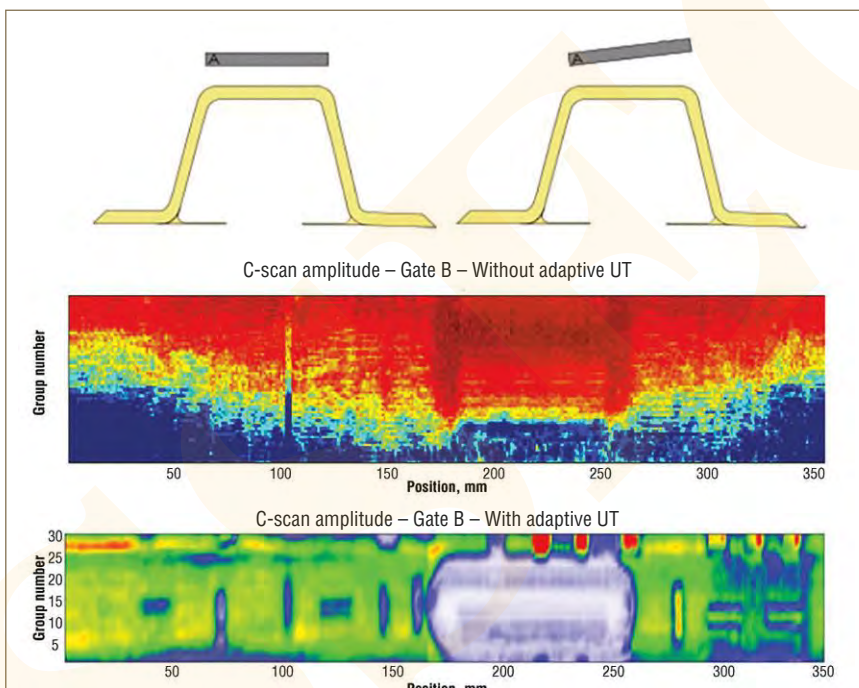
Adaptive ultrasound can be implemented in such a way that it does not impact productivity when compared with conventional phased array. In addition, a live data display is required during the inspection, so the algorithm for adaptive ultrasound has to be directly implemented in the inspection instrument to obtain real-time data visualization.



Inspecting uniform varying radiuses with (left) and without (right) adaptive focusing.




Inspecting non-uniform (weighted) varying radiuses with (left) and without (right) adaptive focusing.



Misalignment with (bottom) and without (center) adaptive focusing.

Conclusion

Adaptive ultrasonic phased array is an excellent method to improve the ultrasonic inspection of composite components with complex shapes. The ability to adapt the ultrasonic beams to the component's actual shape brings more confidence and reliability to the inspection process and reduces the quantity of rescans, improving productivity. Also, compensating for the misalignment of the phased-array probe minimizes the need for extremely precise mechanics.

Used manually or with a high-performance scanner, this method enables users to quickly inspect large surfaces with high resolution because its implementation does not compromise productivity. Adaptive phased array is used successfully for complex aircraft components inspection, and it is becoming common in other industries, including automotive, energy and petrochemical. 

For more information: Contact André Lamarre, M.Sc., business development manager – aerospace and power generation industries, Olympus NDT Canada, Quebec City, Quebec; email: andre.lamarre@olympus-ossa.com; web: www.olympus-ims.com. Etienne Grondin is the product line manager – integrated instrumentation.



INDUSTRIAL HEATING

Use this QR-Code to read more about heat & corrosion resistant materials/composites on the *Industrial Heating* website.

Coming in July...

The industry's comprehensive resource for locating equipment suppliers for nearly any high-temperature thermal-processing equipment system, component and/or supplies. *Industrial Heating's* 2018 Buyer's Guide – in print and online!

Access from your
Desktop

Optimized for
Tablets

Even on Smart
Phones

Searchable on
Laptops



Searching for parts, equipment, services, training, consulting, testing or manufacturers? Use the above QR-Code to visit industrialheating.com/directories



Energy-Saver Update

This section showcases energy-saving products and technologies from some of this month's advertising companies.

Across International

Induction Heaters

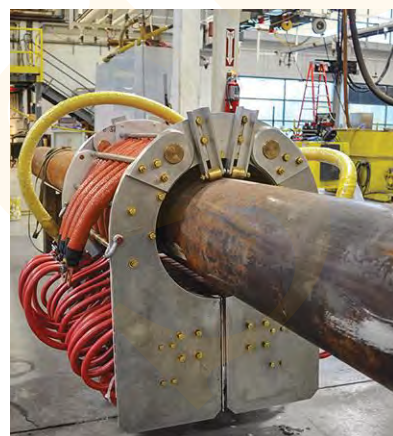
Across International offers a complete line of all solid state energy-saving induction heaters for various purposes. High-frequency induction heaters are good for powder, small parts and surface heating, as well as with high efficiency. heaters are good for precise heating mid-cycle induction heaters large-sized parts, requires deep heat penetration. They are also great for large amounts of gold, silver, copper or melting.

www.acrossinternational.com



Ajax TOCCO

There are many design elements in induction heating that need to be considered in order to maximize efficiency. The relationship between the workpiece and the diameter of the coil has a much greater impact on efficiency than any other factor in the system. This is especially true for forging lines, bar lines and pipe-and-tube systems. Ideally, the coil should be closely coupled to the workpiece, providing just enough air gap to allow for sufficient refractory and space so that the refractory or coil will not be damaged by an errant billet, bar or tube. Sometimes it becomes a trade-off between efficiency and productivity. These are best considered prior to purchasing an induction system during the analysis



and vendor-selection phase. Good communication with a vendor like Ajax TOCCO can help you plan for a new system or look at modifications to existing equipment.

www.AjaxTocco.com

DMP CryoSystems

The CryoFurnace is the first and only cryo processor available with a temperature range of 1200°F to -300°F. The CryoTemper (550°F to -300°F) continues to set the standard for which all other systems are judged. It remains the most efficient and versatile cryogenic tempering equipment on the market. To maximize energy-efficiency, LED indicator lights, high-efficiency Baldor Motors and variable-frequency drives are standard on all models. The CryoFurnace and CryoTemper maximize temperature efficiency with 6 inches of multilayer insulation. Using liquid nitrogen as a cooling medium keeps maintenance costs low and reduces the need for rust inhibitors and cleaning. Eliminate paper waste with the onboard digital recorder available in the Level II control system.

www.cryosystems.com



EPCON® Industrial Systems

EPCON® Industrial Systems shipped an integrated "thermal de-oiler" system, for cleaning residual oil present in HVAC coils, combined with a thermal oxidizer consisting of primary and secondary heat recovery. The equipment is designed to destroy toxic solvents evaporated during a thermal cleaning process. The Primary HE preheated oven exhaust air in the oxidizer and the Secondary HE supplied hot air to the oven, minimizing overall energy demand. The optimized system reduced energy consumption by 5.5 MMBTU/hr, resulting in \$125,000 savings annually. www.epconlp.com



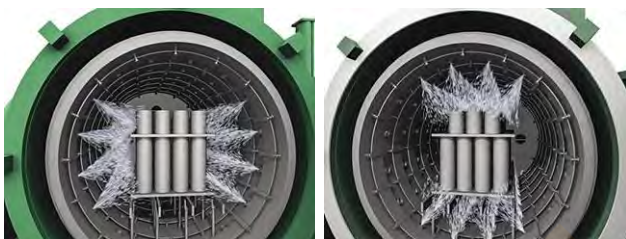
G-M Enterprises

Four-Directional Gas Flow

Quantum Quench™ four-directional gas flow without internal moving parts is a breakthrough in controlled and uniform cooling while controlling distortion. Generally, gas flow direction affects how heat is extracted from the part:

- A part exposed to top-to-bottom cooling gas flow will have a cooler top surface
- A part exposed to bottom-to-top cooling gas flow will have a cooler bottom surface
- A side-cooled part will be cooler on the gas admission side

www.gmenterprises.com



Ipsen

The Power of PdMetrics®

With the ability to minimize unplanned downtime, reduce costs and place your team's attention where it's most important, the PdMetrics® software platform for predictive maintenance helps you save valuable resources in terms of time, energy and focus. As a result, you can focus on other critical aspects of your business and drive success.

www.IpsenUSA.com/PdMetrics



Lindberg/MPH

The Lindberg/MPH rod overbend electric box furnace provides flexible, efficient performance in a variety of heat-treating applications. The fast heating rate, heavy load capability and reliable operation help you achieve fast turnaround and high productivity. The rod overbend box furnace utilizes energy-efficient components, is simple to

operate and is available in a wide range of sizes. Common applications range up to 2000°F (1850°F with fan) with endothermic, exothermic, dissociated ammonia or nitrogen atmospheres.

www.lindbergmph.com



Otto Junker

Energy efficiency and excellent process reliability are key characteristics of Otto Junker's heat-treatment line for wheels. In this line – which features a solution annealing furnace, a quench and an artificial aging furnace – hot flue gas generated in the solution annealing process is injected into the artificial aging furnace for energy-saving purposes. For situations where this heat input is insufficient, process reliability is guaranteed by a so-called booster providing backup heating capacity. The wheels pass through the furnace on a walking-beam conveyor, which offers significant advantages over traditional conveyor concepts. It eliminates the need for product carriers and thus saves the energy needed to heat them up. The walking-beam concept is also capable of handling different wheel sizes while providing highly accurate positioning without relative movements. The equipment is low maintenance, user-friendly and offers high availability.

www.otto-junker.com



Praxair

OPTIFIRE™ burners may improve overall reheat furnace performance while lowering NOx emissions with oxy-fuel

Continued on p.46





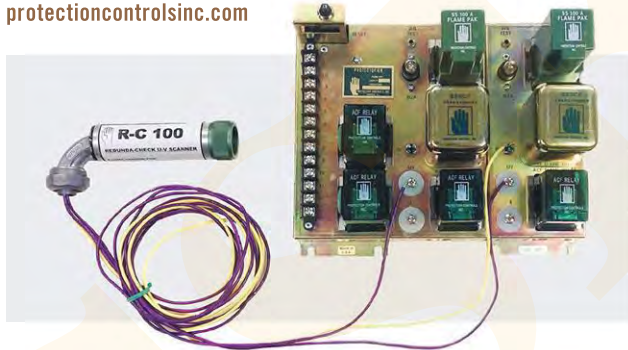
Continued from p.45

combustion. They can also deliver on-demand production increases. The burners use the Dilute Oxygen Combustion (DOC) principle, where fuel and oxygen are injected into the furnace through separate ports. The reactants mix with the hot furnace gases before reacting with each other. This dilution effect helps prevent the high peak temperatures that are responsible for NO_x generation. OPTIFIRE burners have been installed on over 500 furnaces, including steel reheat furnaces, forge furnaces, nonferrous furnaces and ladle preheaters. www.praxair.com

Protection Controls Inc.

Combustion Safeguard

R-C 100 provides safety on continuous, 24-hour burner applications for single burner as well as multi-burner applications. The dual/redundant self-check ultraviolet flame sensor and combustion safeguard control may be used only with 6642 Protectofiers, which have a 180-degree phase power supply. The system contains two UV tubes in one ultraviolet sensor to monitor one burner flame. Each UV tube is powered during a different time cycle to eliminate interference between the two UV tubes. It has no moving parts and displays high signal strength. www.protectioncontrolsinc.com



Safe Cronite

Heat-Resistant Alloy Furnace Parts

North American Cronite, a division of Safe Cronite, is a manufacturer and designer of cast and fabricated heat-resistant alloy furnace parts. The company specializes in handling fixtures, cast base trays and baskets, radiant tubes, rolls and corrugated boxes. www.safe-cronite.us



SECO/Vacuum Technologies

CaseMaster Evolution Vacuum Furnace

SECO/Vacuum Technologies' unique CaseMaster Evolution (CME) multi-chamber vacuum furnace can be equipped for both oil and gas quenching, delivering increased productivity and efficiency versus atmosphere furnaces. It operates with shorter carburizing cycle times. With no CO or CO₂ emissions,



very low consumption of processing mediums and no additional energy-consuming equipment such as endothermic generators,

the CME is the perfect furnace to help growing firms transition into vacuum while reducing energy costs at the same time.

www.secovacusa.com

Wisconsin Oven

High-Efficiency Upgrade

Wisconsin Oven is proud to offer their E-Pack™ Oven upgrade. This optional energy-efficient package, which includes thicker wall panels, high-efficiency motors, a door limit switch and a few other energy-saving items, will reduce operating costs, which saves thousands of dollars! Not only will the E-Pack reduce operating costs, your return on investment will be measured in months, not years. A typical payback for the initial investment is in the 9-15 month range. www.wisoven.com



Industrial Heating

Get Connected with Social Media!

It's easier than ever to stay connected to the best source of news and information. Become a part of our online communities and access exclusive information, breaking news, event coverage and more. Connect with us on Facebook, Twitter, Google+, YouTube or LinkedIn to receive updates and to network with other industry professionals.

www.industrialheating.com/connect



LITERATURE & WEBSITE SHOWCASE



Industrial Gases

Air Products

Air Products, a worldwide leading industrial gas supplier, brings significant experience in gas supply, applications development and safety to help you improve quality, reduce operating costs and increase production. We offer high-purity gases, gas-handling equipment and technical know-how from metals-processing-focused applications engineers to help you succeed. www.airproducts.com/mp



High-Purity Hydrogen On-Demand

Nel Hydrogen

Nel Hydrogen is a global leader in hydrogen energy and innovative gas solutions. Our advanced Proton PEM electrolysis systems coupled with our uncompromising attention to excellence and quality enables us to deliver, install and support gas generation units in applications including powder metallurgy, MIM, heat treating and materials processing. www.ProtonOnSite.com



Innovative Furnaces

Otto Junker GmbH

Established in 1924, OTTO JUNKER GmbH draws on more than 90 years of experience and continuous product development. The product range embraces melting, casting, heating and heat-treating equipment for the aluminum and copper industries as well as melting and casting equipment for iron and steel foundries. www.otto-junker.com



Atmospheres

Praxair Inc.

Based on the proven benefits of nitrogen/hydrogen processes with customers who previously used disassociated ammonia or exothermic gas, Praxair has made advances in atmosphere use and pressure control for improved furnace operations. www.praxair.com



Combustion Safeguards

Protection Controls Inc.

This comprehensive Service Manual covers all PROTECTOFIER combustion safeguard units. It provides important and valuable information on installation, service guides, testing and troubleshooting as well as specifications, features and application on Protection Controls' single and multi-burner units. For a free copy, fax 847-674-7009. www.protectioncontrolsinc.com

Print
Packs
a Punch

61% of
Industrial Heating
subscribers rely on ads in the
magazine to inform them of
new products or services.*

Print magazine advertising works
regardless of ad size or placement.**

Ads on physical paper create a
multisensory experience; touching the
pages sparks a neural response that may
improve comprehension and later inspire
action. That's why print is here to stay.



**INDUSTRIAL
HEATING**

*Industrial Heating 2017 Reader Preference/Profile Study **The Association of Magazine Media

Interested in advertising?
Contact your sales representative and learn more at
bnpsolutions.com/printegrate

Parts, Service & Consulting **Aftermarket**

PARTS • SERVICE • CONSULTING

Contact: Becky McClelland • Phone: 412-306-4355 • Fax: 248-502-1076 • becky@industrialheating.com

2018 Rates: Just \$150 per month for a single card, \$295 for a double card. We'll post your ad online for an additional \$30.



**YOUR GLOBAL SOURCE FOR QUALITY
HEAT TREAT FURNACE PARTS & SERVICE**

Call: 248-624-8191

Fax: 248-668-9604

spareparts@afc-holcroft.com

OEM PARTS ★ SERVICE ★ REBUILDS ★ UPGRADES



1. NO COST DISASSEMBLY, INSPECTION AND EVALUATION WITH ITEMIZED QUOTATION FOR THE REPAIR.

2. OEM SPECIFICATION ON ALL MECHANICAL FITMENTS AND CLEARANCES.

3. PARTS AND COMPONENTS MADE IN AMERICA OR OEM FACTORY REPLACEMENTS.

4. FOUR STAGE RECONDITIONING PROCESS:

- AGITATED CAUSTIC HOT TANK

- HOT AQUEOUS RINSE

- GLASS BEAD BLAST

- SOLVENT/DETERGENT RINSE



5. MACHINED/GROUND BEARING SURFACES.

6. FAST FOURIER TRANSFORM (FFT) ALGORITHM BALANCING

7. DYNAMIC PERFORMANCE TEST AND NORMAL OPERATING TEMPERATURE BREAK IN.



8. ONE YEAR WARRANTY ON MATERIALS AND WORKMANSHIP.

9. COMPREHENSIVE REVERSE ENGINEERING CAPABILITY ON EARLY MODEL EQUIPMENT AND COMPONENTS.

10. ISO 9001:2015 CERTIFIED QUALITY MANAGEMENT SYSTEM.

ROOTS



METALLURGICAL
HIGH VACUUM CORPORATION
6708 124TH AVENUE



FENNVILLE, MI 49408

PH. 269-543-4291 FX. 269-543-4750

WEB: www.methivac.com

ISO 9001-2015 CERTIFIED QMS



**INDUCTION
HEATING
SOLUTIONS**

Ajax Tocco
www.AjaxTocco.com

AFTERMARKET SERVICES

- Field Service Installation
- Vacuum Leak Testing/Repair
- Preventative Maintenance
- Used/Rebuilt Furnaces

Alan Fostier: afostier@centorr.com
Dan Demers: ddemers@centorr.com

CUSTOM HIGH-TEMPERATURE VACUUM FURNACES

www.centorr.com



55 Northeastern Blvd., Nashua, NH 03062
Ph: 603-595-7233 • Fax: 603-595-9220
sales@centorr.com

ELECTROHEAT

Specializing in Induction Heating Technologies

- Coil Repair, Design & Development Services
- Induction Heating Systems: design, sales & service
- Application Development

ELECTROHEAT, LLC Phone: (262) 644-5100
4925 Krebs Drive Fax: (262) 644-5115
Hartford, WI 53027 Cell: (414) 659-7570
Website: www.eheatllc.com
1-800-925-8565

DeKalb Blower
HIGH TEMPERATURE FANS
INDUSTRIAL FANS AND BLOWERS

BUILT 2 YEAR LAST
WARRANTY

OPERATING TEMPERATURES
TO 2200°F

AIR COOLED & WATER
COOLED DESIGNS

WWW.DEKALBBLOWER.COM

MTI SINCE 1933 PH: 630.553.8831
SALES@DEKALBBLOWER.COM

NEW UNITS ~ REPLACEMENT PARTS
REPAIR/REBUILD SERVICES

Single or **DOUBLE**
Aftermarket Cards
BIG IMPACT for a Small Price!

Starting at \$150 per month for a black & white card

HEAT TREAT EQUIPMENT

Quality Used Heat Treating Equipment
Installation and Start-Up Services
Appraisal Services

Visit www.heattretequip.com
for current inventory

John L. Becker, II • Ph: 734-331-3939
Fax: 734-331-3915 • Cell: 734-516-2814

Aftermarket at Surface Combustion includes:

Aftermarket Parts • Equipment Service
Furnace Rebuilds/Upgrades

Benefits of Surface Combustion Aftermarket Services:

Historical documentation to provide the right solution the first time
Multi-million dollar parts inventory
First class customer service with phone support
Well trained field service engineers • Expedited shipping on stock parts

**Surface® Combustion**

Aftermarket Direct Line 800.322.7278
1700 Indian Wood Circle, Maumee, OH 43537
www.surfacecombustion.com

Aftermarket service and
support for any brand
of heat-treating equipment.

Ipsen Customer Service

1-844-Go-Ipsen

Toll free: 1-844-464-7736

- Calibrations
- Maintenance
- Parts
- Service
- Retrofits
- Training
- Upgrades

go.ipsenUSA.com/ICS

**Induction Heating**

For more information
contact us at
800-558-7733



www.pillar.com



UltraFlex
POWER TECHNOLOGIES

INDUCTION HEATING

631 467-6814 ultraflexpower.com

Industrial Heating Reprints & Reprint Plaques

If it's been printed in *Industrial Heating*, you can have it reprinted by *Industrial Heating*.

Customize your reprints with your company's ad, special message or even the cover of *Industrial Heating*.

Contact: Becky McClelland at 412-306-4355

CLASSIFIED MARKETPLACE**EQUIPMENT FOR SALE****Mowry Enterprises, Inc.**

New ★ Used ★ Rebuilt ★ Solutions

★ FOR SALE ★

Ipsen H4848 6 Bar: 30 x 36 x 48,
new graphite hot zone, Internal quench

Abar HR 34-60 : 24 h x 24 w x 60 d,
2 Bar Graphite hot zone, high vac port

Surface 20 22 36 2 bar, High vacuum,
Graphite hot zone,

Heat Source 2 Bar, 1800°C, 20 w x
10 h x 30 dep, Graphite, with debind,
new PLC touch screen controls

Abar HR 26 2 Bar: 2400°F, 18" x 24"
x 36" graphite hot zone, High vacuum, 2 bar
Pressure Quench

**C.I. Hayes 24 x 24 x 36 Vacuum
Temper:** 1450°F

**Borel 18 x 24 x 36 Hydrogen
Retort Furnace:** 1832°F

TM 12 x 12 x 20: graphite hot zone,
high vacuum, internal quench, 5 psig positive
quench

www.mowryenterprises.com
email: grm@mowryenterprises.com
Phone: 978-808-8634 Fax: 508-845-4769

FOR SALE**PHOENIX
INDUCTION CORPORATION**

Qualified Induction Specialists
with over 90 years of combined
experience, providing on site:

- Troubleshooting "down" equipment
- Quality preventative maintenance
- Acid flushing, thermal imaging & analysis
- Large inventory of OEM parts, as well as other manufacturers, AJAX*, AIH*, Bone Frontier*, IEH*, and Robotron*
- 24/7/365 days a year emergency phone support

Call: 248-486-8760
sales@phoenixinduction.com
www.phoenixinduction.com

*Registered trademarks of their respective companies

**FOR SALE****High Temperature
Adhesive & Sealant**

Moist Creamy Putty
Just Apply and Let Dry
Bonds Most Materials
Resists Chemicals,
Electricity, Molten Metals
and Abrasion



COTRONICS CORP.

www.cotronics.com
sales@cotronics.com • 718-788-5533

FOR SALE**FOR SALE**

Lindberg Pit Nitrider Model:

3896-EC12, Retort Size:

31" x 84" • 1200°F • Electric



Furnaces, Ovens & Baths, Inc.

P.O. Box 900 • Clarkston, MI. 48347

Cell: 248-343-1421 • Web: www.fobinc.com

FOR SALE**ENDOTHERMIC CATALYST**

★★★ Next Day Delivery ★★★

11/16" and 1" Cubes in Stock

THE FINEST QUALITY THE LOWEST PRICE

Call 847-202-0000 or Fax 847-202-0004



THE DUFFY COMPANY

283 E. Hellen Rd., Palatine, IL 60067
www.duffycompany.com

CLASSIFIED MARKETPLACE

INDUSTRIAL HEATING

offers high-impact packages so you can find the most qualified job candidates!

Contact Becky McClelland at: 412-306-4355 or becky@industrialheating.com

2018 Print Rates: \$150 per column inch for 1x frequency; \$140 for 3x; \$125 for 6x; \$120 for 12x

► Print ad PLUS online posting: Add \$49.00

► Print ad, Online Ad PLUS IH Daily News Brief Eblast: Add \$75.00

Web ONLY! Need Maximum Exposure Right Away? Online Ad Posting, IH Daily Newsbrief and Listing: \$250.00

EMPLOYMENT OPPORTUNITY

SALES REPS WANTED

Pro-Tech Company Inc., the leading supplier of cast furnace parts, trays, baskets & fixtures to heat treaters, furnace parts to steel companies, is looking for sales reps in the following areas: PA, WV, VA, NJ, DE, MD, CA, AZ, IN, KY, & WA.

Send resume or current line card to:
mbarron@protechcompanyinc.com
www.protechcompanyinc.com



PROTECH

Furnace Production, Downtime Reduction.

BUSINESS OPPORTUNITY

FOR SALE

Small Commercial Heat Treat Co.
Southeastern U.S.

GREAT OPPORTUNITY!

Make money on your first day

Contact:

John Bouley 860-875-3712

FOR SALE

FOR SALE

Ipsen Bottom Load Vacuum Furnace

- ID: 60" Diam x 96" High
- (OFWF² Y² NZ
- "Shaped" Graphite Heating Elements
- Mech. Pumps & 35" Diffusion Pump
- "Closed Loop" Water Cooling System
- 7RS 0 RXQMG & RRQJ) DQ
- Digital Controls
- Excellent, Operational Condition (Aerospace Certs).



Cleveland, OH
Ph: 440-519-3800
Email: sales@whkay.com

THE W.H. KAY COMPANY

FOR SALE

INTEGRAL QUENCH FURNACES FOR SALE

AFC - HOLCROFT

(2) INTEGRAL QUENCH FURNACES, 36"W x 30"H x 48"L, 1,800°F Max, Recuperated with Top Cool, Rear Handler, Oil Heaters (54kW), Re-Circ. Fan, Control System.

SURFACE COMBUSTION

(2) INTEGRAL QUENCH FURNACES, 30"W x 30"H x 48"L, 1,750°F, 1,000,000 BTUH, Trident Tubes, Endo/Natural Gas/Ammonia, SSI Atmosphere Controllers, SSI Gold Probes, Oil Filters And SBS Coolers. System Comes Complete with a Gas Fired Temper, Washer and Charge Car.

SURFACE COMBUSTION

INTEGRAL QUENCH FURNACE, 5000 lb. Payload Each, 36"W x 36"H x 72"L, Recuperated Rear Handler And Controls.

SURFACE COMBUSTION

INTEGRAL QUENCH FURNACE, 10,000 lb. payload, 87" W x 87" L x 36" H, 1,850°F, 4,600,000 BTUH, 12,500 Gallons, 6 Agitators, Eclipse Burners, 3 Rear Handlers & Controls with PLC.

Park Thermal International (1996) Corp.

2 Locations: Georgetown, ON and Buffalo NY
Toll Free: (877) 834-HEAT (4328)
Email: jmistry@parkthermal.com
Website: www.parkthermal.com

FOR SALE

CARBURIZE FASTER? IT ONLY SEEMS IMPOSSIBLE

: 1M & Y GH SRLQV
• CH₄ LV DQ D V XQG-HFRQWRO
(DMQ GUMH DQ UHMGXDOFUEHQ
, QIR VHK QH VORDG RI SDUV
1 R EXLQRI² 1 R Z DVM
5 2 ,² P RQMV
) XWUH VDYQJ V DUH DQSRÀV



HEAVY CARBON CO. ENDOCARB
700 lb. gear carburized 18% faster



HEAVY CARBON CO., LLC

Please send questions & specs to:

George Barbour

heavycarbon@frontiernet.net

Online at www.heavycarbon.com

Place Your IH Classified Ad Today!

FOR SALE

TORQUE DIGITAL TOOLS

- Digital torque drivers up to 44 lbf-in
- Ratchet & adjustable digital torque wrenches up to 147 lbf-in
- High accuracy
- Programmable torque presets
- Selectable: ozf-in, lbf-in, kgf-cm, N-cm
- NIST-Traceable Calibration Cert included

800-373-9989
www.imada.com

IMADA, Inc.® ISO9001 & ISO/IEC 17025 Accredited

INDUSTRIAL HEATING

Visit the Industrial Heating Classified Marketplace online! Updated Daily!

Post Your Employment Ad, Used Equipment For Sale Ad or Aftermarket Services ad Today!

Contact Becky at 412-306-4355 or becky@industrialheating.com

CLASSIFIED MARKETPLACE

Since 1936

THE W. H. **Kay** COMPANY

Used Heat Treating Furnaces and Ovens

ATMOSPHERE GENERATORS

750CFH	Endothermic Ipsen	Gas
800CFH	Endothermic Surface	Gas
1,000CFH	Exothermic Gas Atmos.	Gas
1,500CFH	Endothermic Lindberg (Air)	Gas
2,000CFH	Ammonia Dissoc. Drever (3)	Elec
3,000CFH	Endothermic Lindberg (3) - Air	Gas
3,600CFH	Endothermic Surface (2)	Gas
5,600CFH	Endothermic Surface (3)	Gas
6,000CFH	Gas Atmos. Nitrogen Generator	Gas

BOX FURNACES

12" x 24" x 10"	Lindberg (Atmos.)	Elec 2000°F
12" x 24" x 10"	Lindberg (Atmos.)	Elec 2500°F
12" x 24" x 12"	Hevi Duty (2)	Elec 1950°F
12" x 32" x 12"	L&L (Retort)	Elec 2000°F
13" x 24" x 12"	Electra Up/Down	Elec 2000°F
17" x 14.5" x 12"	L&L (New)	Elec 2350°F
18" x 30" x 13"	Hevi-Duty	Elec 1850°F
18" x 36" x 18"	Lindberg (Fan)	Elec 1850°F
20" x 48" x 12"	Hoskins	Elec 2000°F
24" x 48" x 24"	Hevi-Duty	Elec 2350°F
36" x 48" x 36"	CEC (Atmos-N ₂)	Elec 2000°F
36" x 72" x 42"	Eisenmann (Car Bottom)	Gas 3100°F
60" x 216" x 48"	IFSI (Car Bottom)	Gas 2400°F
60" x 156" x 60"	Lindberg Car Bottom	Gas 1850°F
64" x 180" x 68"	Swindell-Dress. Car Bottom	Gas 2350°F
126" x 420" x 72"	Drever "Lift-Off" (2) (Atmos.)	Gas 1450°F

PIT FURNACES

14" Dia x 60"D	Procedyne Fluid Bed	Elec 1850°F
28" Dia x 48"D	L&L Nitridor	Elec 1200°F
72" Dia x 72"D	Flynn + Dreffin (2) (Atmos.)	Elec 1400°F
48" Dia x 60"H	"Bell" Nitridor (Retort)	Elec 1200°F

VACUUM FURNACES

15" x 24" x 10"	Ipsen - VFC 224	Elec 2400°F
24" x 36" x 18"	Hayes (Oil Quench)	Elec 2400°F
24" x 36" x 24"	TM - Temper	Elec 1400°F
48" x 48" x 24"	Surface (2-Bar)	Elec 2400°F
48" x 60" x 48"	Abar (HR-66)	Elec 2400°F
60" Dia x 96"H	Ipsen "Bottom Load"	Elec 2400°F

INTEGRAL QUENCH FURNACES

24" x 36" x 24"	AFC (Top-Cool-Line)	Elec 1850°F
30" x 48" x 20"	Surface (2)	Gas 1750°F

BELT FURNACES/OVENS

24" x 18'L	Thermal Basic Belt Line	Gas 1750°F
24" x 40" x 18"	Despatch	Elec 500°F
32" x 24" x 12"	OSI Slat Belt	Gas 450°F
36" x 24" x 8"	Surface Cast Belt (Line)	Gas 1750°F
36" x 28" x 22"	Lewco (2)	Elec 350°F
60" x 40" x 14"	GE Roller Hearth (Atmos)	Elec 1650°F
60" x 40" x 14"	Wellman Roller Hearth (Atmos)	Elec 1650°F

MISCELLANEOUS

Combustion Air Blowers (All sizes)		
24" x 36"	Lindberg Charge Car (Manual)	
30" x 48"	Surface Charge Car (SE-ER)	
SBS Air/Oil Coolers (4)		
24" x 36" x 24"	Salt Quench Tanks (2)	Elec 1000°F
30" x 48" x 30"	Surface Washer	Gas
Wilson Hardness Testers (Superficial)		
(2) Bell & Gossett "Shell & Tube" Heat Exchangers		
26" x 15" x 15"	Belt Washer/Dryoff	Gas
36" x 48"	AFC Charge Car (DE)	Elec
30" x 30" x 30"	Subzero	-105 to 375°F Elec.

MISCELLANEOUS (continued)

SBS Air/Oil Coolers (4)		
AFC Pusher Line (Atmos.)		Gas 1750°F
36" Wide Table – Rotary Hearth (Atmos.)		Elec 1850°F
30" x 48"	Surface Roller Table	
36" x 48"	Holcroft Charge Car (DE)	
48" x 60" x 60"	Steel "Roll-in" Carts (3)	
54" Dia x 108" H	Ebner Bell (Atmos.)	Gas 1650°F

OVENS/BOX TEMPERING

8" x 18" x 8"	Lucifer	Elec 1250°F
12" x 16" x 18"	Lindberg (3)	Elec 1250°F
14" x 14" x 14"	Blue-M	Elec 1050°F
14" x 14" x 14"	Gruenberg	Elec 1200°F
14" x 14" x 14"	Blue-M	Elec 650°F
14" x 14" x 14"	Gruenberg (solvent)	Elec 450°F
15" x 24" x 12"	Sunbeam (N ₂)	Elec 1200°F
20" x 18" x 20"	Blue-M	Elec 400°F
20" x 18" x 20"	Despatch	Elec 650°F
20" x 18" x 20"	Blue-M	Elec 650°F
20" x 18" x 20"	Blue-M (2)	Elec 800°F
22" x 18" x 15"	Precision Quincy	Elec 1000°F
24" x 20" x 20"	Blue-M	Elec 1000°F
24" x 24" x 24"	Grieve	Elec 650°F
24" x 24" x 36"	New England	Elec 800°F
24" x 24" x 48"	Blue-M	Elec 600°F
24" x 36" x 24"	Grieve	Elec 500°F
24" x 36" x 24"	Demtec (N ₂)	Elec 500°F
24" x 36" x 24"	AFC (N ₂)	Elec 1250°F
24" x 36" x 24"	Trent	Elec 1400°F
25" x 20" x 20"	Blue-M	Elec 650°F
24" x 36" x 48"	Gruenberg	Elec 500°F
25" x 20" x 20"	Blue-M (Inert)	Elec 1100°F
26" x 26" x 38"	Grieve (2)	Elec 850°F
30" x 30" x 60"	Gruenberg	Elec 450°F
30" x 30" x 48"	Process Heat	Elec 650°F
30" x 38" x 48"	Gruenberg (Inert) (2)	Elec 450°F
30" x 48" x 30"	Surface (3)	Elec 1400°F
30" x 48" x 30"	Surface (Atmos)	Elec 1400°F
36" x 36" x 36"	Surface	Elec 1250°F
36" x 36" x 36"	Grieve (Solvent)	Elec 500°F
36" x 36" x 36"	Blue M Environment Chamber (-18°C to +200°C)	
36" x 42" x 72"	Gruenberg	Elec 450°F
36" x 48" x 36"	Pollution Control Burn Off	Gas 850°F
36" x 48" x 36"	Grieve	Elec 350°F
36" x 36" x 60"	AFC	Gas 1250°F
36" x 48" x 36"	Despatch	Elec 500°F
36" x 60" x 36"	TPS (Environmental) Elec -40°C to +200°C	
36" x 84" x 36"	CEC (2)	Elec 650°F
37" x 25" x 37"	Lindberg (1996)	Gas 800°F
38" x 20" x 26"	Despatch	Gas 500°F
42" x 72" x 36"	Grieve	Elec 500°F
48" x 48" x 20"	Despatch	Elec 1350°F
48" x 34" x 52"	Lindberg	Elec 1250°F
48" x 48" x 48"	Heat Mach. (2)	Elec 500°F
48" x 48" x 48"	TPS - Environmental	Elec 392°F
48" x 48" x 48"	Trent	Elec 1250°F
48" x 48" x 48"	L&L (Atmos)	Elec 1250°F
48" x 52" x 60"	Despatch	Elec 500°F
48" x 52" x 68"	Despatch (Solvent)	Elec 500°F
48" x 48" x 72"	Despatch	Elec 650°F
48" x 48" x 48"	Lindberg (Argon Atmos)	Elec 1400°F
50" x 50" x 50"	Grieve	Elec 1250°F
55" x 30" x 60"	Precision Quincy (2)	Elec 350°F
68" x 72" x 72"	Gruenberg (4)	Elec 450°F
72" x 120" x 78"	Grieve	Gas 500°F
72" x 180" x 72"	Precision Quincy	Elec 450°F
72" x 252" x 60"	Precision Quincy "Car Oven"	Gas 500°F
108" x 96" x 65"	Eisenmann (4)	Gas 1200°F

FOR SALE



R & G Services, Inc.
101 Bissell Street, Joliet, IL 60432

Heat Treating Equipment
New & Used
Service • Installation • Rebuilds
Nickel Catalyst Cubes
IN STOCK

Phone: (815) 727-3300

Fax: (815) 727-3335

Please visit our website for a
complete list of available
furnaces, ovens & generators

www.randgservices.com

Email: weston@randgservices.com

FOR SALE

SPARK IGNITERS *New Design*

NEW DESIGN

- Improved Performance
- Longer Life
- Larger Gap
- Floating Spark
- Direct Replacement

Call for model/pricing information

THE DUFFY COMPANY
283 East Hellen Road • Palatine, IL 60067
Tel: 847.202.0000 • Fax: 847.202.0004
www.duffycompany.com

Industrial Heating's
Classified Section Online 24/7 at
www.industrialheating.com

30925 Aurora Road • Cleveland, Ohio 44139 • (440) 519-3800 Fax (440) 519-1455

web: www.whkay.com

e-mail: sales@whkay.com



http://twitter.com/IndHeat or www.industrialheating.com/FB-UsedEquip

EQUIPMENT FOR SALE

HEAT TREAT EQUIPMENT

42056 Michigan Avenue. Canton, MI 48188
Phone: 734-331-3939 • Fax: 734-331-3915
E-mail: john@heattreatequip.com

Batch Temper Furnaces

C0052 Surface Combustion Batch Temper Furnace (30"W x 48"L x 30"H, 1200°F, gas-fired)
C0068 Despatch Box Furnace (60"W x 72"D x 66"H, 395°F, electric)
U3644 BeaverMatic Batch Temper Furnace (36"W x 48"D x 36"H, 1500°F, gas-fired)
V1010 Dow Batch Temper Furnace (30"W x 48"L x 20"H, 1250°F, gas-fired)
V1024 PIFCO Batch Temper Furnace, Skid Hearth (36"W x 48"L x 30"H, 1200°F, electric)
V1049 Surface Combustion Temper Furnace (87"W x 87"L x 36"H, 1350°F, gas-fired)
V1068 Surface Combustion Oil Quench Furnace (30"W x 30"D x 48"H, 1950°F, gas-fired)
V1081 Lindberg Batch Temper Furnace (20"W x 24"D x 18"H, 1250°F, electric)
V1090 Lindberg Nitrogen Temper Furnace (24"W x 36"D x 18"H, 1350°F, gas-fired)
V1095 Surface Combustion Temper Furnace (30"W x 48"D x 30"H, 1250°F, gas-fired)
V1096 Surface Combustion Temper Furnace (30"W x 48"D x 30"H, 1400°F, gas-fired)
V1106 Dow Batch Normalizer Furnace (45"W x 84"D x 32"H, 1800°F, gas-fired)

Batch High-Temp Furnaces

U3556 Pacific Industrial Batch High-Temp Furnace (24"W x 36"L x 18"H, 2800°F, electric)
U3637 Pacific Scientific Batch Temper (30"W x 48"D x 24"H, 1600°F, gas-fired)
U3643 Surface Combustion Temper Furnace (30"W x 48"D x 42"H, 1400°F, electric, 81kw)
V1013 Thermolyne High-Temp Batch Furnace (10"W x 14"L x 9"H, 2000°F, electric)
V1067 Seco Warwick Batch High-Temp Furnace (24"W x 24"H x 36"D, 1800°F, electric)
V1130 Onspec Slot Forge Furnace (72"W x 96"D x 48"H, 2000°F, gas-fired)

Batch Oil Quench Furnaces

C0086 Huber Car Bottom Furnace (10'4"W x 12'9"D x 8'H, 1800°F, gas-fired)

Car Bottom Furnaces

V1140 Beavermatic Car Bottom Furnace (48"W x 72"D x 48"H, 1600°F, gas-fired)
V1141 Beavermatic Car Bottom Furnace (60"W x 144"D x 60"H, 1400°F, gas-fired)

Drop Bottom Furnaces

C0069 Enviro-Pak Drop Bottom Furnace (48"W x 48"D x 48"H, 1200°F, electric)
U3543 Despatch Drop Bottom Furnace (4"W x 6"L x 4"H, 1200°F, electric)

Internal Quench Furnaces

C0064 Lucifer IQ Furnace (18"W x 24"D x 18"H, 1900°F, electric)
U3569 Surface Combustion IQ Furnace (24"W x 18"H x 36"D, 1750°F, gas-fired)
U3570 Surface Combustion IQ Furnace (24"W x 36"D x 18"H, 1750°F, gas-fired)
U3606 Dow/AFC IQ Furnace (30"W x 48"L x 24"H, 1850°F, gas-fired)
V1046 Surface Combustion IQ Furnace (87"W x 87"L x 36"H, 1850°F, gas-fired)
V1047 Surface Combustion IQ Furnace (62"W x 62"L x 36"H, 1850°F, gas-fired)
V1048 Surface Combustion IQ Furnace (62"W x 62"L x 36"H, 1850°F, gas-fired)
V1062 Surface Combustion Super IQ Furnace (36"W x 72"D x 36"H, 1950°F, gas-fired)
V1082 Holcroft IQ Furnace with Top Cool (36"W x 48"D x 30"H, 1850°F, gas-fired)
V1083 Holcroft IQ Furnace with Top Cool (36"W x 48"D x 30"H, 1850°F, gas-fired)
V1092 Surface Combustion Allcase IQ Furnace (30"W x 48"L x 30"H, 1850°F, gas-fired)
V1093 Surface Combustion Allcase IQ Furnace (30"W x 48"L x 30"H, 1850°F, gas-fired)
V1111 Surface Combustion IQ Furnace (30"W x 48"D x 30"H, 1850°F, gas-fired)

Mesh Belt Brazing Furnaces

C0102 JL Becker Mesh Belt Brazing Furnace (30"W x 24.5" heated L x 10"H, 2050°F, electric)
C0103 JL Becker MB Brazing Furnace w/Exo & Dryer (30"W x 24.5" heated L x 10"H, 2050°F, electric)
C0119 Grieve Mesh Belt Furnace (36"W x 15" Heated L x 15"H, 1100°F, gas-fired)
U3529 CI Hayes Mesh Belt Brazing Furnace (18"W x 6"H x 8' heating, 2100°F, electric)
U3592 JL Becker Mesh Belt Brazing Furnace (12"W x 6"H, 2100°F, electric)
V1035 Seco Warwick Mesh Belt Brazing Furnace (18"W x 12"H, 2100°F, electric)

Mesh Belt Tempering Furnaces

C0044 CGS Moore Mesh Belt Curing Oven (22"W x 20"L x 10"H, 500°F, gas-fired)
C0073 Heat Machine Mesh Belt Tempering Furnace (24"W x 10"L x 12"H, 1250°F, gas-fired, PT2501)
C0075 Industrial Heating Mesh Belt Tempering Furnace (24"W x 22"L x 12"H, 950°F, gas-fired, PT3630)
C0080 Surface Combustion Mesh Belt Temper Furnace (18"W x 11"H, 13' long, 1000°F, gas-fired)
C0081 Park Thermal Mesh Belt Temper Furnace (17.5"W x 7"H, 15' 8" long, 900°F, gas-fired)
C0090 Hengli Mesh Belt Sealing Furnace - Atmosphere (5.9"W x 3.5"H, 2100°F, electric)
U3638 American Gas Furnace MB Temper Furnace (31"W x 5"H, 17' heated length, 1100°F, gas-fired)
V1022 Surface Combustion Mesh Belt Tempering Furnace (42"W x 36"D x 12"H, 1350°F, gas-fired)

Pit Furnaces

V1088 Leeds & Northrup Pit Furnace (24" ID x 30" deep, 750°F, electric)

Pusher Furnaces

U3648 Ipsen P-12 Pusher Furnace (30"W x 30"L x 30"H, 1650°F, gas-fired)

Roller Hearth & Rotary Furnaces

U3550 PIFCO Powered Roller Hearth Temper Furnace (21"W x 12"L x 18"H, 1000°F, electric)
V1009 Ipsen Continuous Temper Roller Hearth Furnace (24"W x 10"L x 18"H, 1350°F, electric)
V1091 Finn & Dreffein Rotary Hearth Furnace (13'3"ID x 5'3"ID x 4'W x 2'8"H, 2275°F, electric)

Steam Tempering Furnace

U3616 Degussa Durferrit Steam Tempering Furnace (24"Dia x 48"D, 1200°F, electric)

Tip Up Furnaces

C0043 Industrial Furnace Tip-Up Furnace (8"W x 22'4"D x 6'H, 1800°F, gas-fired)

Vacuum Furnaces

C0013 CI Hayes Oil Quench Vacuum Furnace (24"W x 36"D x 18"H, electric)
C0027 Pacific Scientific Vacuum Temper Furnace (24"W x 36"D x 24"H, 1450°F, electric)
C0111 Lindberg Vacuum Furnace (15"W x 24"L x 12"H, 2400°F, electric)
U3612 AVS Vacuum Annealing Furnace 2-Bar (18"W x 24"D x 12"H, 2400°F, electric)
U3635 Lindberg Hydrying Gas Generator (6000 CFH Endo, gas)
V1004 CI Hayes Vacuum Furnace, Oil Quench (18"W x 30"L x 12"H, 2400°F, electric)
V1128 Ipsen Vacuum Furnace (18"W x 32"D x 12"H, 2400°F, electric)
V1131 Abar Vacuum Furnace (34"W x 60"D, 2250°F, electric)
V1135 Abar Vacuum Furnace 2 Bar (72"Dia x 72"Deep, 2400°F, electric)
V1136 Surface Combustion Vacuum Furnace, 2-Bar (26"W x 36"L x 22"H, 2400°F, electric)
V1138 Ipsen Vacuum Furnace, 5-Bar (24"W x 36"L x 14"H, 2400°F, electric)

Endothermic Gas Generators

C0093 JL Becker Modular Endo Gas Generator (3-4000/6-8000/9-12000 CFH)
U3594 AFC-Holcroft Gas Generator (3,000 CFH Endo, gas)
V1075 Lindberg Gas Generator (3000 CFH Endo)
V1105 Surface Combustion Gas Generator (5,600 CFH Endo, 1950°F, gas)
U3647 Lindberg Gas Generator (3000 CFH Endo, 2050°F, gas)
V3512 Surface Combustion Gas Generator - 5,600 CFH Endo

Exothermic Gas Generators

V1036 Seco Warwick Gas Generator (3,000 CFH Exo, gas)

Material Handling - Conveyors

U3565 Conveyor - Roller (48"W x 20'L)

Ovens - Cabinet

U020 Blue-M Oven/Ref (20"W x 20"H x 18"D), (-4°F/400°F)
U3625 Lindberg Atmosphere Oven (38"W x 38"D x 38"H, 850°F, electric)
U3629 Cabinet Oven (30"W x 30"D x 36"H, 750°F, electric)
U3642 Blue-M Cabinet Oven (36"W x 36"D x 36"H, 650°F, electric)

Ovens - Walk-In

C0038 Despatch Walk-In Oven (54"W x 108"L x 72"H, 500°F, electric)
C0039 Gehmrich Walk-In Oven (72"W x 96"L x 72"H, 400°F, electric)
C0108 Park Thermal Walk-In Oven (90"W x 144"D x 72"H, 850°F, gas-fired)

Freezers

V1129 Webber Freezer (-120°F, electric)

Blowers

U018 Twin City Blower (20 HP, RBA-SW, Class 22)

Charge Cars

U3621 Dow Charge Car, DEDP (66"W x 60"D x 54"H)
V1051 Surface Combustion Charge Car (DEDP, 87"W x 87"L)
V1085 Holcroft Charge Car (DE/DP, 36"W x 48"D)
V1112 Surface Combustion Charge Car, SE, 30"W x 48"D

Scissors Lifts & Holding Stations

V1086 Holcroft Scissors Lift & (2) Holding Tables

Heat Exchanger Systems

U030 Graham Systems Heat Exchanger - Plate
V1104 SBS Heat Exchanger

Holding & Cooling Stations

V1113 Forced Cool Station (30"W x 48"H x 30"D)
Many other holding stations - ask for details

Water Cooling Systems

U3404 JL Becker Cooling Tower with Tank (Tower: 51"W x 36"L x 64"H, Tank: 72"W x 84"L x 66"H)
U3595 JL Becker 2-Tank Water Cooling System (tank: 72"L x 36"W x 37"H, 2 Dayton 1HP Motors)
U3646 HydroThrift, Duplex Pump Base, Water Cooling System
V1038 Bell & Gossett Shell & Tube Heat Exchanger with Tank

Washers

V1052 Surface Combustion BIQ Washer (87"W x 87"L x 36"H, 180°F, gas-fired)
V1084 Holcroft Spray/Dunk Washer (36"W x 48"D x 30"H, 190°F, gas-fired)
V1101 Surface Combustion Spray Washer (36"W x 48"D x 30"H, 180°F, electric, 53kw)

Transformers

Extensive inventory of all types of transformers for any and all applications

Baskets & Boxes

Extensive inventory of heat treat baskets and boxes

Heat Treat Lines

V1137 T-6 Annealing & Aging Furnace Line

★ For Miscellaneous Parts Inventory and Complete Equipment Listings visit www.heattreatequip.com ★

INDUSTRIAL HEATING REPRINT PLAQUES ARE NOW AVAILABLE
Contact Becky McClelland at 412-306-4355 or becky@industrialheating.com

FOR SALE

FOR SALE**Surface Combustion
Super Allcase****36" x 48" x 30" • Gas Fired
1750°F System 1 • 3 Available****Furnaces, Ovens & Baths, Inc.**

P.O. Box 900 • Clarkston, MI. 48347

Cell: 248-343-1421 • Web: www.fobinc.com

Contact Becky McClelland at 412-306-4355
or becky@industrialheating.com
to place your 2018 Industrial Heating
Classified Marketplace ad in print or online

**IT'S ALL
ONLINE**

PHONE
TABLET
COMPUTER

**INDUSTRIAL
HEATING**

The International Journal of Thermal Processing

JULY 2017

**2017
BUYERS
GUIDE**

Revised and Updated for 2017

9,532 PRODUCT LISTINGS

IN 572 CATEGORIES

IN PRINT AND ONLINE AT

industrialheating.com/buyersguide

**INDUSTRIAL
HEATING**

2017 Buyers Guide Online at:
www.industrialheating.com/buyersguide

EQUIPMENT FOR SALE

2 Locations to
Better Serve You

**We Have Over 500 Pieces of Equipment in Stock**

If your needs are not listed below, please let us know and we will locate a furnace/oven to suit your needs. We have all the ancillary equipment available for the above such as Tempering Furnaces, Washers, Charge Cars and Endo Generators.

Price is what you pay. Value is what you get. — Warren Buffett

CAR BOTTOM FURNACE

Gas Fired Car Bottom Furnace, 10' wide x 25' long x 8' high, 1,650°F, 18,000,000 BTUH, 16 North American Burners, 3 zones of control, 440V, 3 Phase, 60 Cycle complete with controls.

BEAVERMATIC

Beavermatic Gas Fired Car Bottom Furnace, 4' wide x 6' long x 4' high, 1,400°F max., 15,000 LB capacity, finer lined, powered car complete with ceramic piers, exhaust, blower and Honeywell controls.

BEAVERMATIC

Beavermatic Gas Fired Car Bottom Furnace, 5' wide x 12' long x 5' high, 1,400°F max., 30,000 LB capacity, fiber lined, powered car complete with ceramic piers, exhaust, blower and Honeywell controls.

ABAR

ABAR HORIZONTAL VACUUM FURNACE, 2 BAR, 24"W x 18"H x 36"L, 2,400°F, 1,000 LBS, 150 KW complete with Nitrogen or Argon Atmosphere, Spencer Blower, Varian Diffusion Pump, Stokes Mechanical Pump, Roots Blower Moly Elements, controls, circular hot zone and loader.

ABAR

ABAR HORIZONTAL VACUUM FURNACE, 2 BAR, 24"W x 24"H x 36"L, 2,400°F, 1,000 LBS, 150 KW complete with Nitrogen or Argon Atmosphere, Spencer Blower, Varian Diffusion Pump, Stokes Mechanical Pump, Roots Blower Moly Elements, controls, circular hot zone and loader.

HOLCROFT

Holcroft Gas Fired Mesh Belt Furnace, 24"W x 9"H x 14' 8"L, 400,000 BTUH, 750°F c/w controls.

HUBER

Huber Gas Fired Car Bottom Furnace, 10'-4"W x 8'H x 12'-8"L, 1,800°F, 5,200,000 BTUH and controls.

INDUSTRIAL HEATING EQUIPMENT

Industrial Heating Equipment Gas Fired Mesh Belt Furnace, 24"W x 10"H x 22'L, 500,000 BTUH, 950°F c/w controls.



Since 1938

★ Visit us online at: www.parkthermal.com ★**Park Thermal International (1996) Corp.**

62 Todd Road, Georgetown, ON L7G 4R7 | 257 Elmwood Ave., Suite 300, Buffalo NY 14222-2249

Tel: (905) 877-5254 • Fax: (905) 877-6205 • Toll Free: (877) 834-HEAT (4328)

Email: jmistry@parkthermal.com • Website: www.parkthermal.com**PARK THERMAL**

Park Thermal Gas Fired Box Furnace, 3' W x 3' H x 4' L, 1,200°F, 500,000 BTUH, pneumatic vertical rising door, powered rollers and controls.

PARK THERMAL

Park Thermal Electric Salt Bath Nitriding System complete with 30" Dia. X 36" deep Pre-Heat Furnace, Nitriding Salt Bath, 38" x 38" x 30" deep Oxidation Quench Tank, 30" x 40" x 36" deep Oxidation Quench Tank, 2 Wash Tanks, 3 Rinse Tanks, 4 Air Cool Stations and Controls.

PARK THERMAL

Park Thermal Gas Fired Mesh Belt Furnace, 17-1/2"W x 7"H x 15' 8"L, 375,000 BTUH, 900°F c/w controls.

PROCESS HEAT

Gas Fired Furnace, 7"W x 5"H x 7'L, Max. Temp. 1,250°F, 10,000 Lbs capacity, Excellent Temp. Uniformity Profiles and controls.

SALT BATH TRANSFORMERS

WPI Main Aluminum Scott T Dry Type Transformer, 250 KVA, 460 VAC 3 PH Primary, 60 HZ, 25/28/31/34/37/40 VAC 2 PH Secondary

WPI Teaser Aluminum Scott T Dry Type Transformer, 250 KVA, 460 VAC 3 PH Primary, 60 HZ, 25/28/31/34/37/40 VAC 2 PH Secondary

SURFACE COMBUSTION

Surface Combustion Snap Hearth Atmosphere Heat Treat Line, 300 lbs/hr including automatic loading, snap tray Nitrogen/ Natural Gas Hardness Furnace (1,700°F, 18" W x 2.5" H) with inline Salt or Polymer Quench Tanks (1,000 gallons each), Parts Washer/RI (200 gallons), Draw Dry Furnace (40 KW, 1,000°F), Unload Conveyor and controls with Allen Bradley PLC, controller, high limit etc.

SURFACE COMBUSTION

Surface Combustion Gas Fired Mesh Belt Furnace, 42"W x 12"H x 36'-6"L (heated), 1,350°F, 2,000,000 BTUH, 2 zones, 3 fans and controls.

SURFACE COMBUSTION

Electric Batch/Oil Quench Furnace, 30" W x 30" H x 48"L, Max. Temp. 1,950°F, System 1 Rear Handler, 3500 Gal. Quench Tank, 2 Agitators & Controls.

**INDUSTRIAL
HEATING**

Contact Becky McClelland
at 412-306-4355 or
becky@industrialheating.com
for REPRINT PLAQUES



<http://twitter.com/IndHeat> or www.industrialheating.com/FB-UsedEquip

IndustrialHeating.com ■ JUNE 2018

53

INDEX OF ADVERTISERS IN THIS ISSUE

ADVERTISER	PAGE	PHONE	WEBSITE
Across International LLC	9	888-988-0899	www.acrossinternational.com
Air Products & Chemicals Inc.	27	800-654-4567	www.airproducts.com
Ajax TOCCO Magnethermic Corp.	30	800-558-7733	www.pillar.com
Busch LLC	15, 24	800-USA-PUMP	www.buschusa.com
DMP CryoSystems	37	915-351-8500	www.CryoSystems.com
Epcon Industrial Systems LP	35	936-273-3300	www.epconlp.com
G-M Enterprises	BC	951-340-4646	www.gmenterprises.com
Graphite Metallizing Inc.	32	914-968-8400	www.graphalloy.com/IH
HaoShi Carbon Fiber Co., Ltd. GanSu	12	0086-931-8893573	www.chinahaoshi.net.cn
Industrial Heating Equipment Association	IBC	859-356-1575	www.ihea.org
Ipsen Inc.	3	800-727-7625	www.ipsenusa.com
Lindberg/MPH	36	269-849-2700	www.lindbergmph.com
Metal Treating Institute (FNA 2018)	18-19	904-249-0448	www.furnacesnorthamerica.com
Naura	7	86 10 84572692	www.naura.com
Nel Hydrogen	25	203-949-8697	www.protononsite.com
Otto Junker GmbH	40	49 2473 601	www.otto-junker.com
Praxair	29	800-PRAXAIR	www.praxair.com
Protection Controls Inc.	27, 40	847-674-7676	www.protectioncontrolsinc.com
SAFE Cronite Inc.	IFC	440-353-6594	www.safe-cronite.us
SECO/Vacuum Technologies LLC	17	814-332-8400	www.SecoVacUSA.com
Solar Manufacturing	11	267-384-5040	www.solarmfg.com
Surface Combustion Inc.	4	800-537-8980	www.surfacecombustion.com
Thermocouple Technology, LLC	23	800-784-3783	www.tteonline.com
Wisconsin Oven Corp.	26	262-642-3938	www.wisoven.com

Get Connected with INDUSTRIAL HEATING



Facebook
www.facebook.com/
IndustrialHeating



Twitter
www.industrialheating.
com/twitter



LinkedIn
www.industrialheating.
com/linkedin



YouTube
www.youtube.com/
industrialheating



ITPS

International ThermProcess Summit

IFCS

International Finishing & Coatings Summit



(c)2017 Gene Phillips, Courtesy ACVB & AtlantaPhotos.com



ITPS and IFCS are executive level summits designed to bring upper management from manufacturing plants and industry suppliers together for networking and information exchange.

Topics will include:

- ▶ Trends in Additive Manufacturing
- ▶ Cybersecurity
- ▶ Factories of the Future / What Does the Future Workforce Look Like?
- ▶ Economic Trends and Their Impact on Manufacturers
- ▶ OEM Panel: Insights on the State of Manufacturing



July 31 - August 1, 2018

Intercontinental Buckhead Atlanta

Atlanta, GA USA

www.itps-ifcs.com

PRESENTED BY



**INDUSTRIAL
HEATING**
Heat Treat Today
Technology, Tips & News for Manufacturers with In-House Heat Treat



**CHEMICAL COATERS
ASSOCIATION INTERNATIONAL**





G-M Model HVF 401-XSFQ (20-BAR)

“State-of-the-art” Vacuum Furnace commissioned at one of the Leading US Commercial Heat Treat Plants.

Having a free work area of 36"W x 36"H x 60"L and a 8,000 lbs. gross loading capacity, Equipped with externally mounted 600 HP motor with Allen-Bradley Variable Frequency Drive (VFD) to provide controlled cooling with externally mounted 14,000,000 BTUs/hour primary heat exchanger and a 300,000 BTUs/Hr. post cooler to provide maximum quenching capabilities for various types of loads and large cross-sections. Furnace controls equipped with Honeywell HC900 and Wonderware Computer Control.

Contact G-M ENTERPRISES for
Furnaces that **REALLY** work

Vacuum Furnaces - Atmosphere Furnaces - Replacement Parts - Hot Zones

Locations: East Coast, Midwest & West Coast

www.gmenterprises.com • phone (951) 340-4646 • fax: (951) 340-9090

